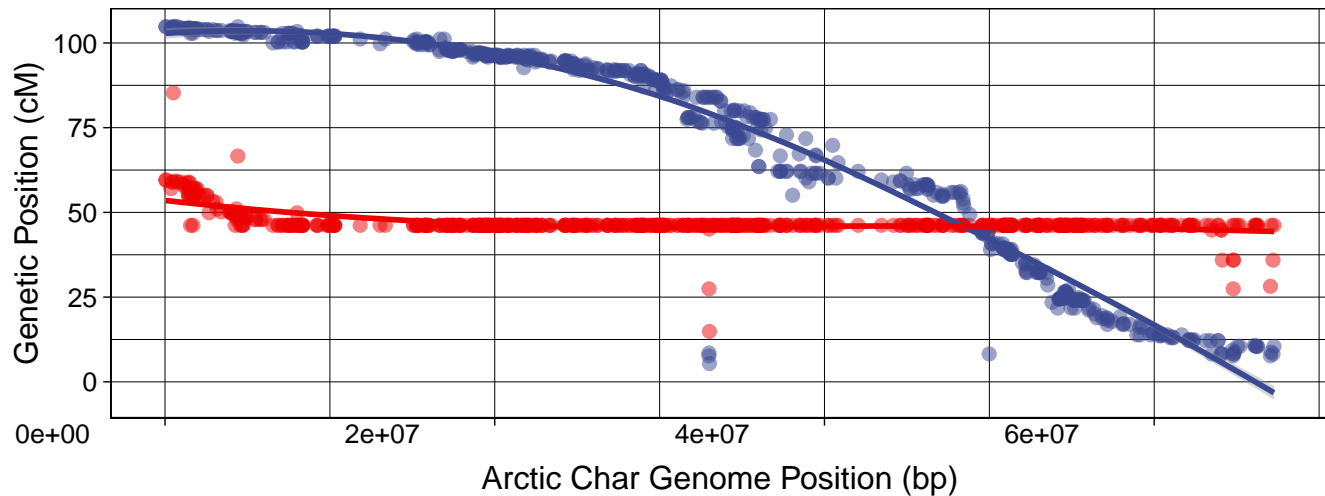
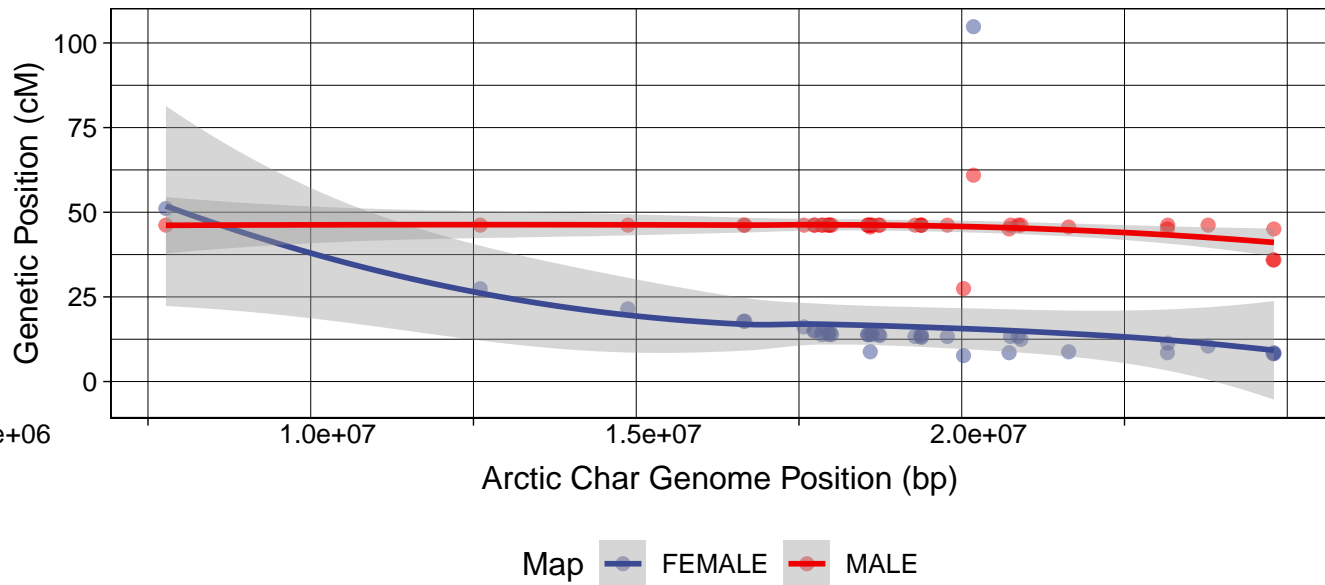


Figure S1: Alignments of male and female lake trout linkage maps to the Arctic Char chromosomes. The following figures display the linkage map position on the Y-axis and the chromosomal position on the X-axis for the two chromosomes with the most alignments for a given linkage groups. Figure headings list the lake trout linkage group first (sna1-42) and the Arctic Char chromosome to which they align second. The male linkage map is displayed in red and the female linkage map is displayed in blue.

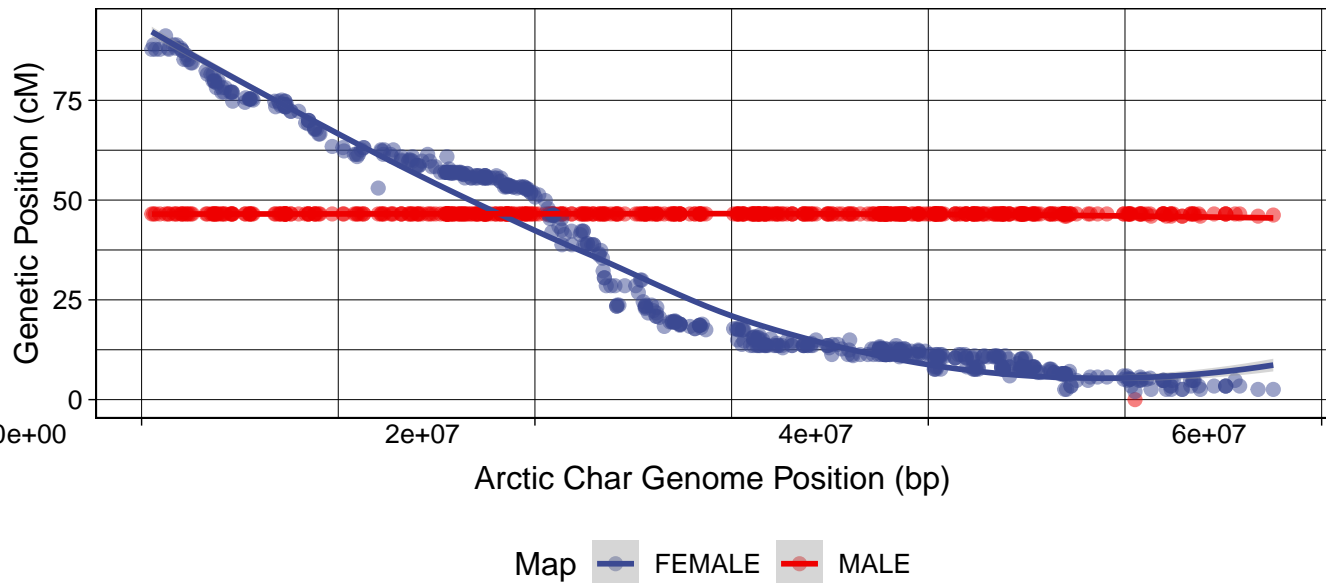
sna1 vs. NC_036855.1



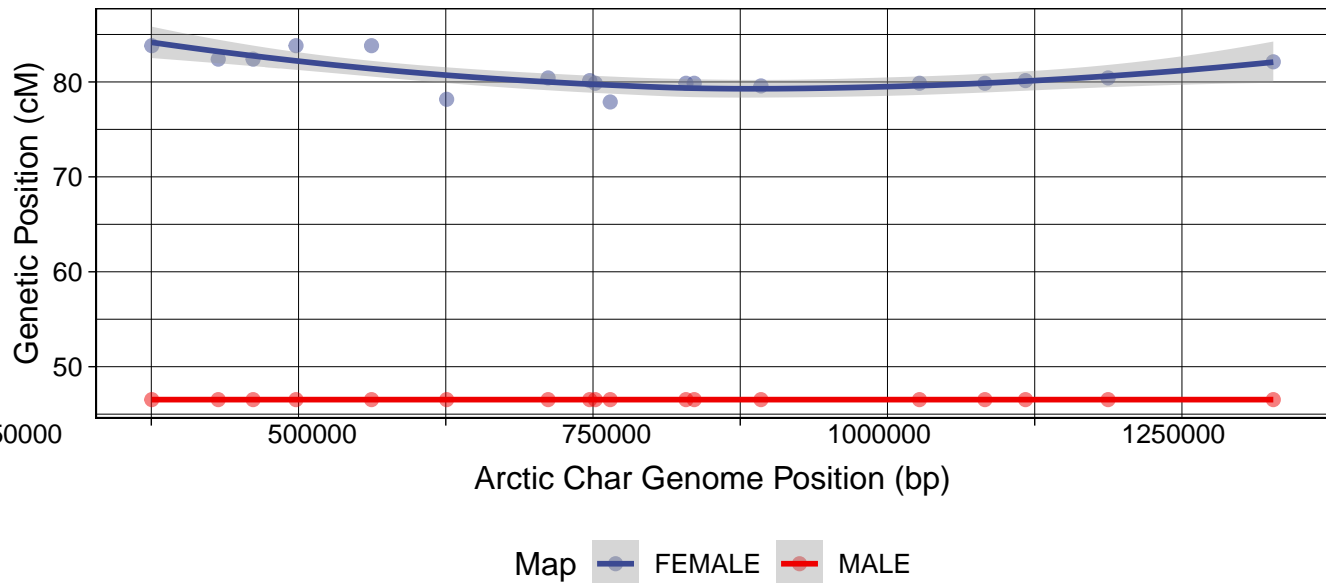
sna1 vs. NC_036850.1



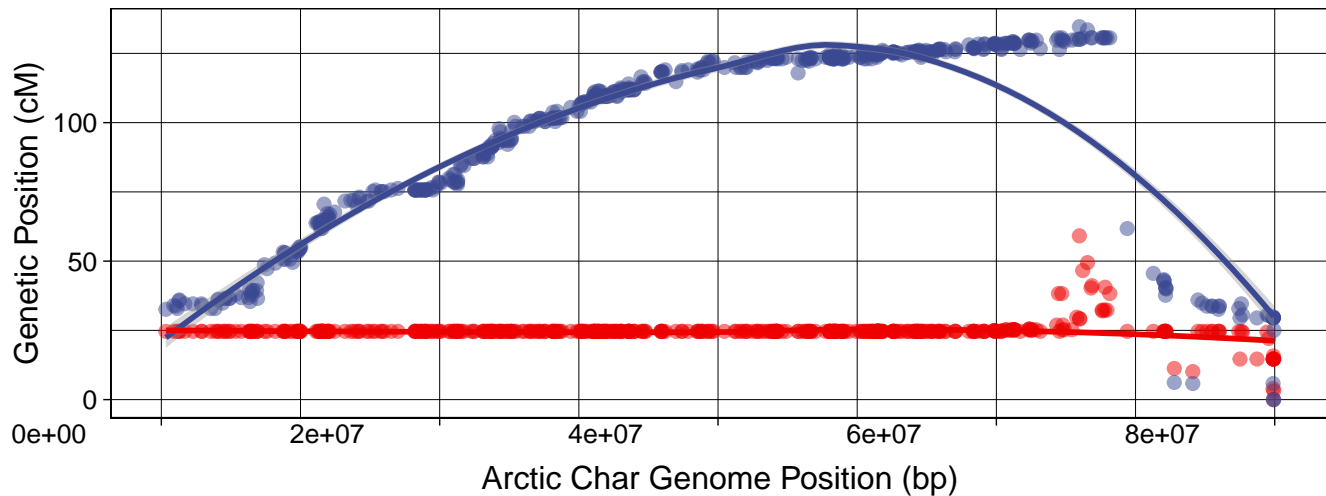
sna2 vs. NC_036838.1



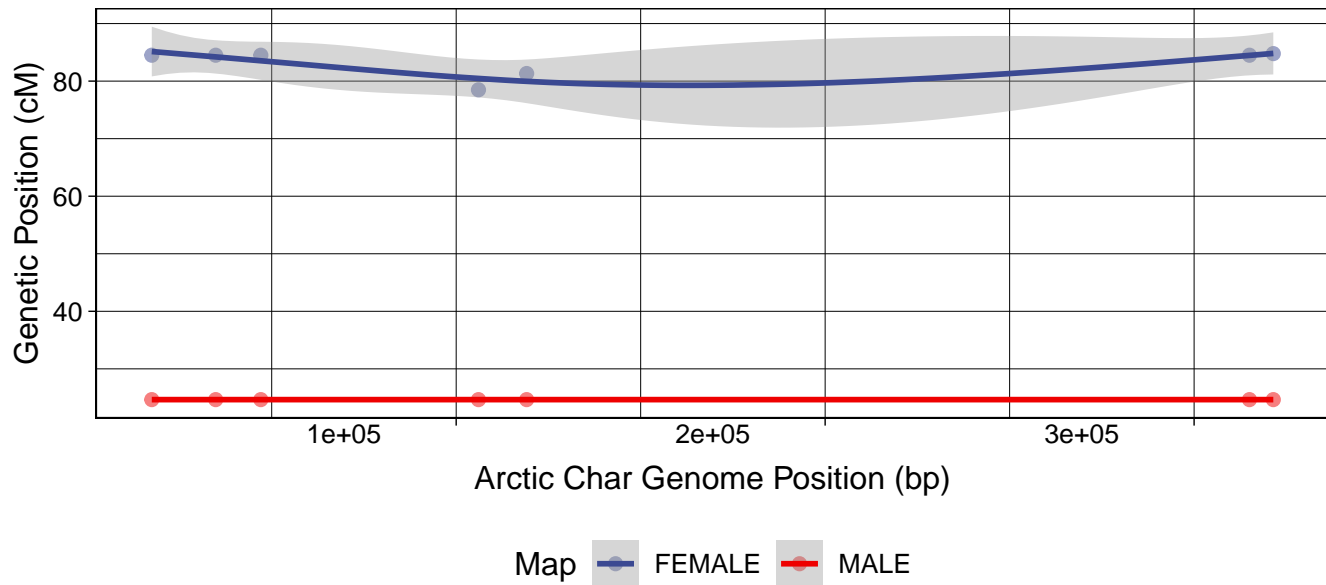
sna2 vs. NW_019942505.1



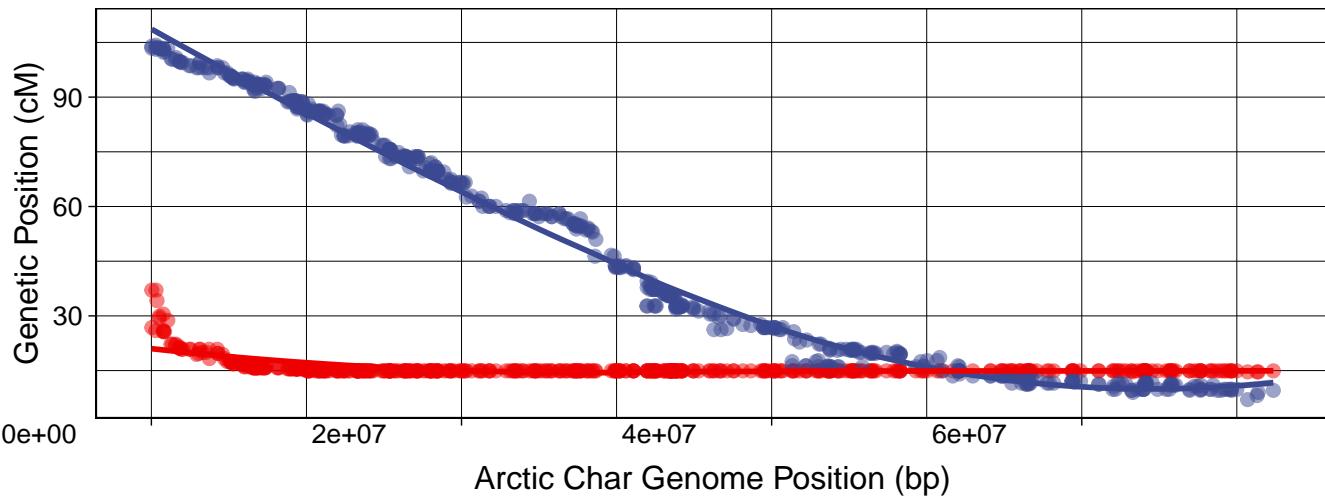
sna3 vs. NC_036860.1



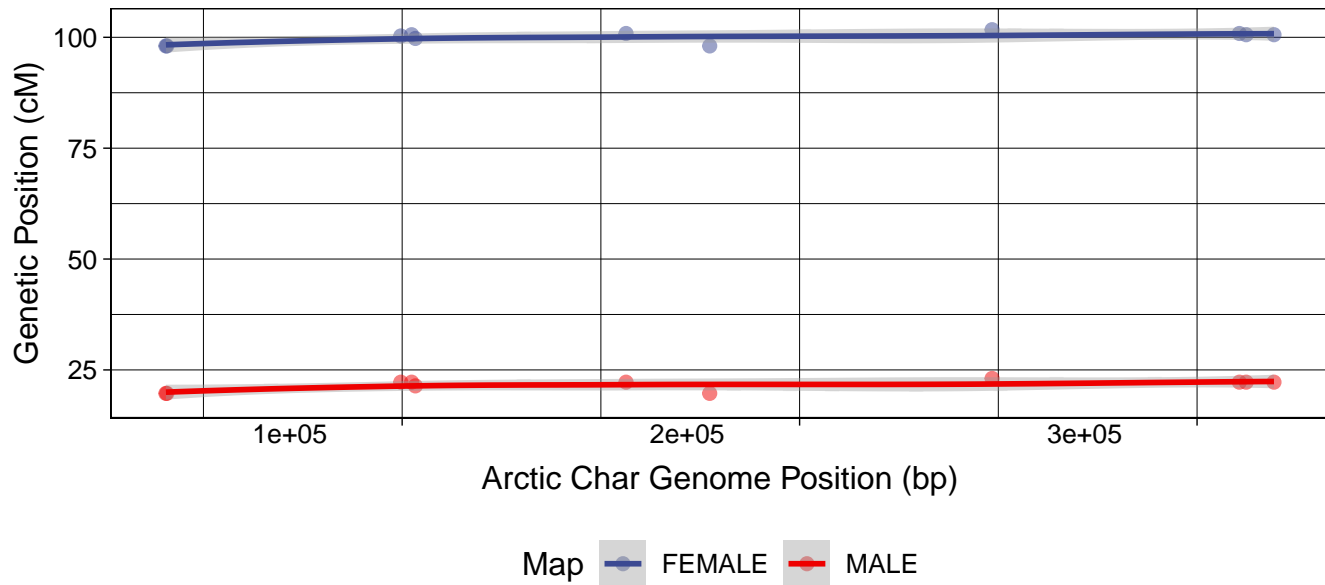
sna3 vs. NW_019942726.1



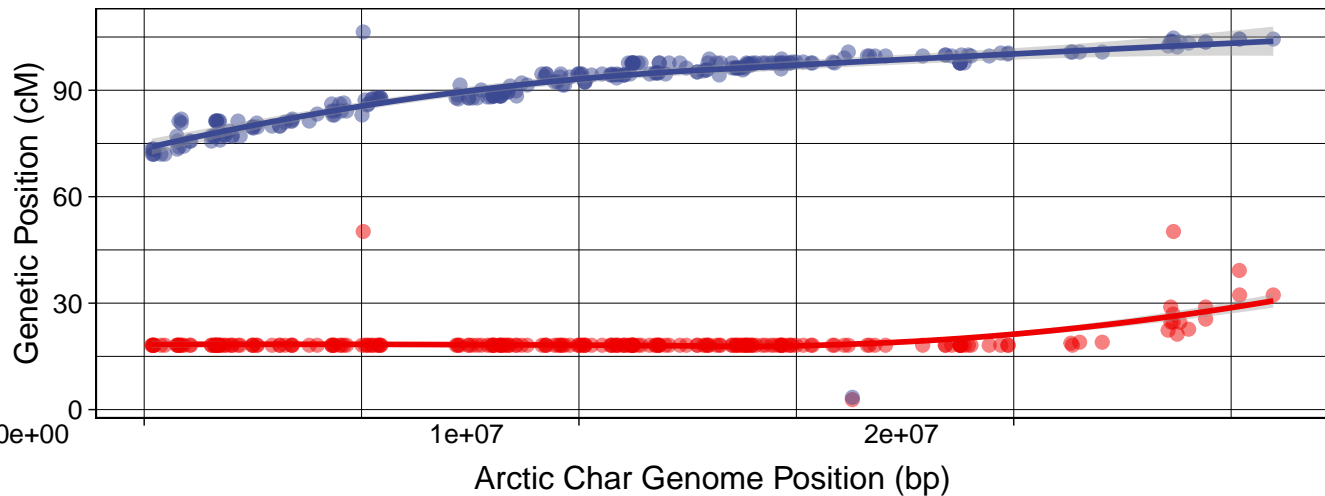
sna4 vs. NC_036858.1



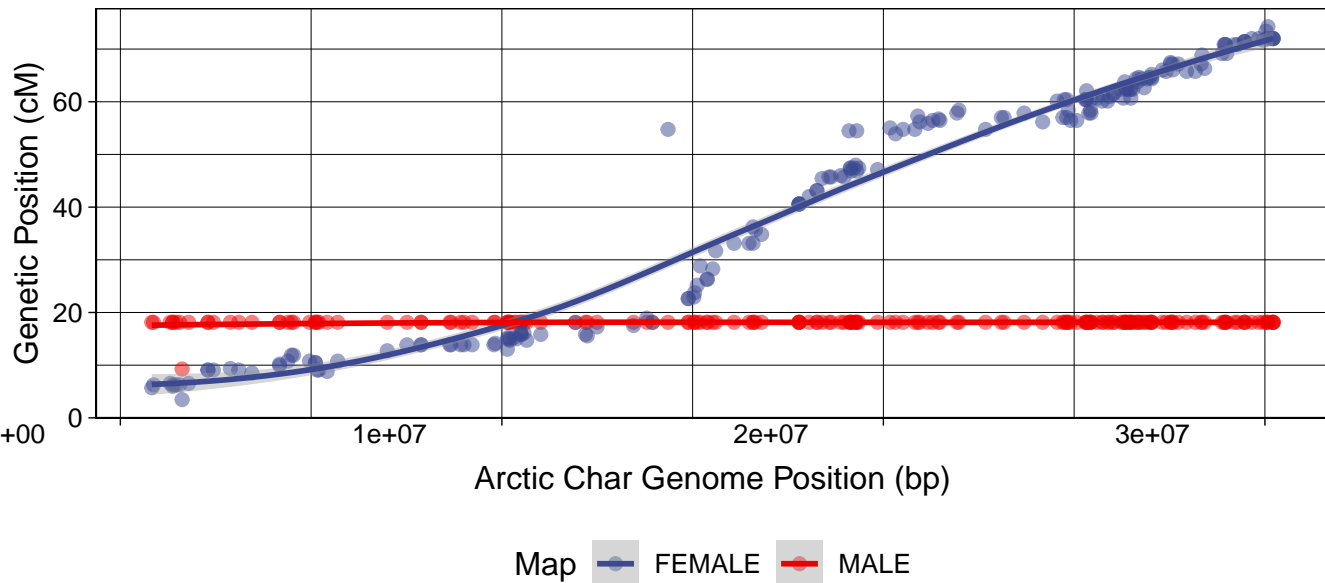
sna4 vs. NW_019942656.1



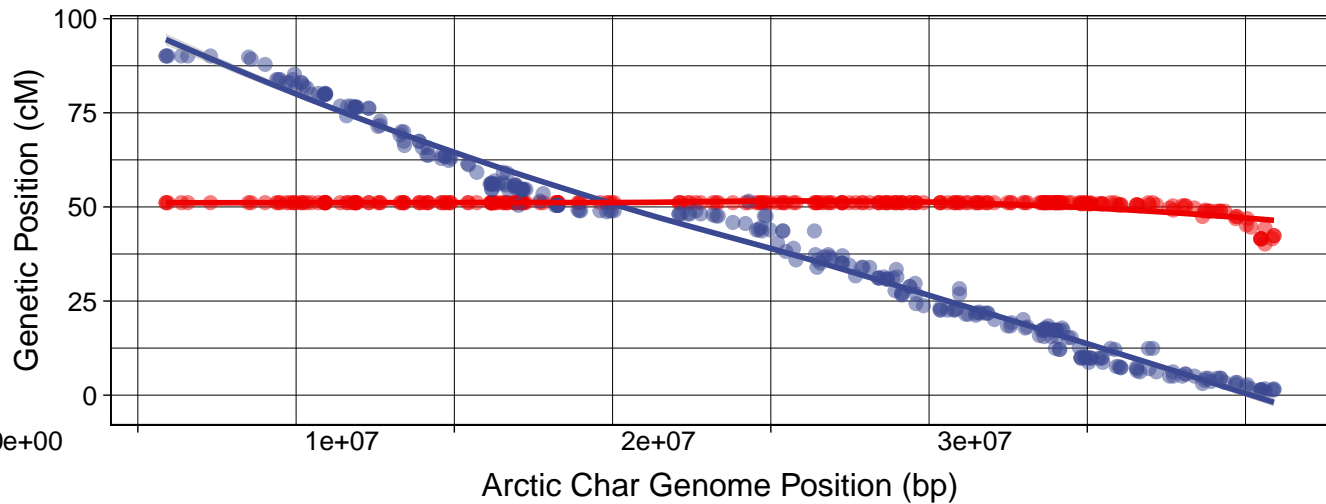
sna5 vs. NC_036846.1



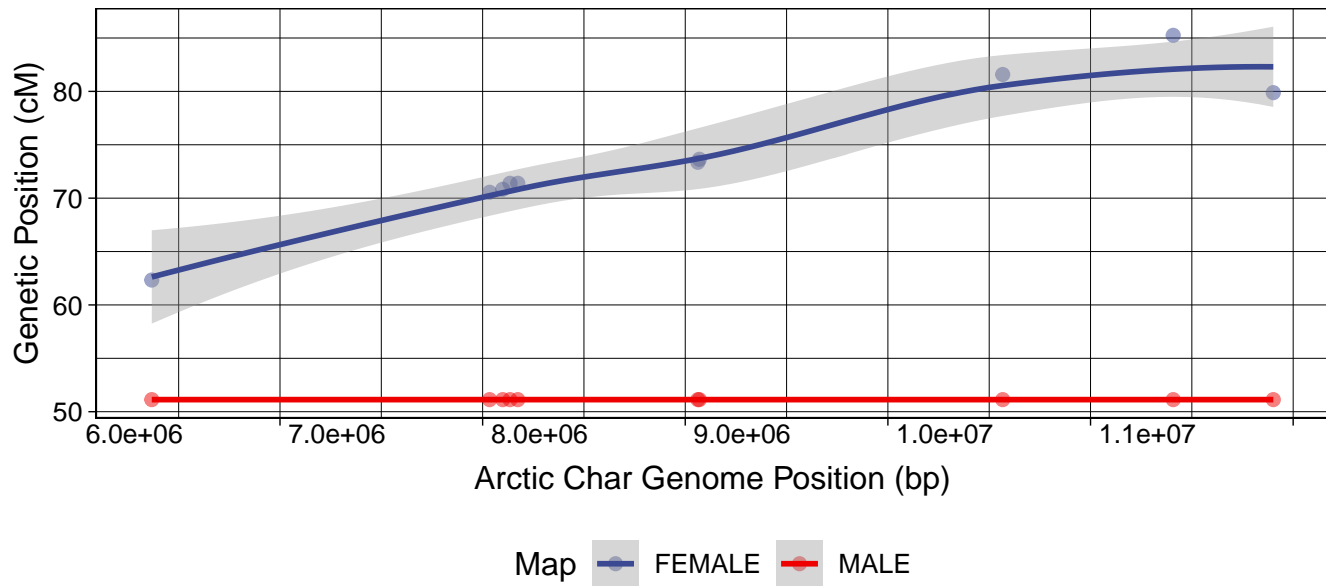
sna5 vs. NC_036845.1



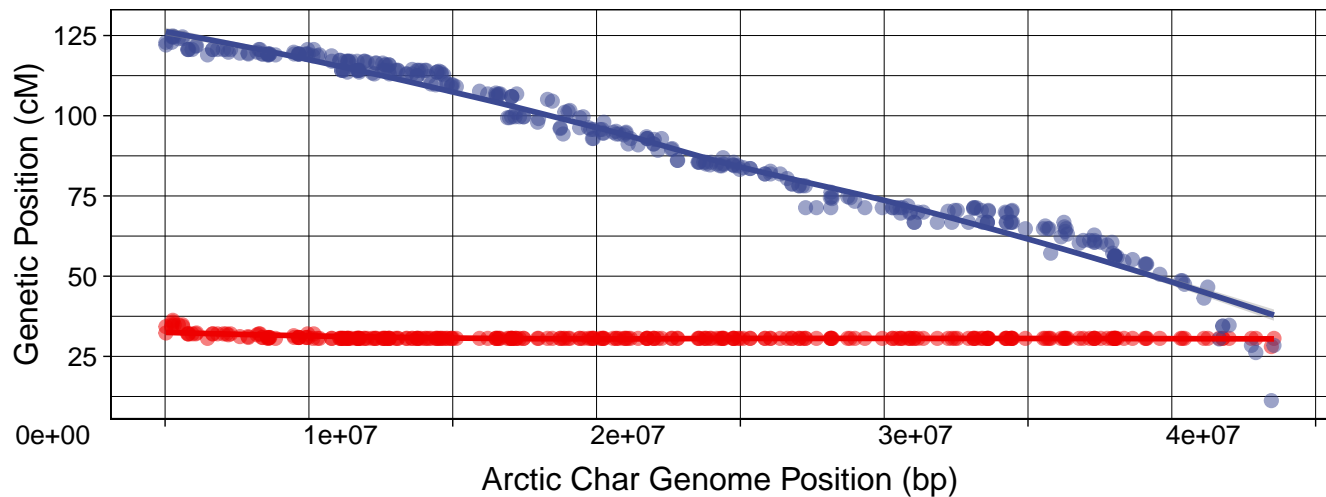
sna6 vs. NC_036840.1



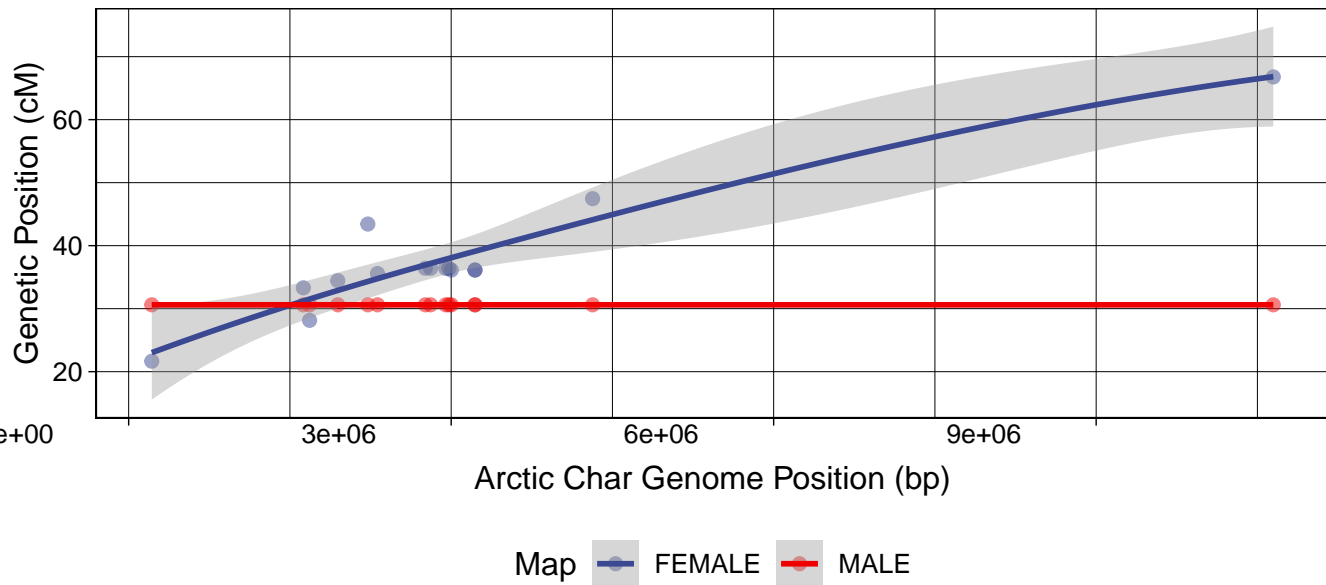
sna6 vs. NC_036864.1



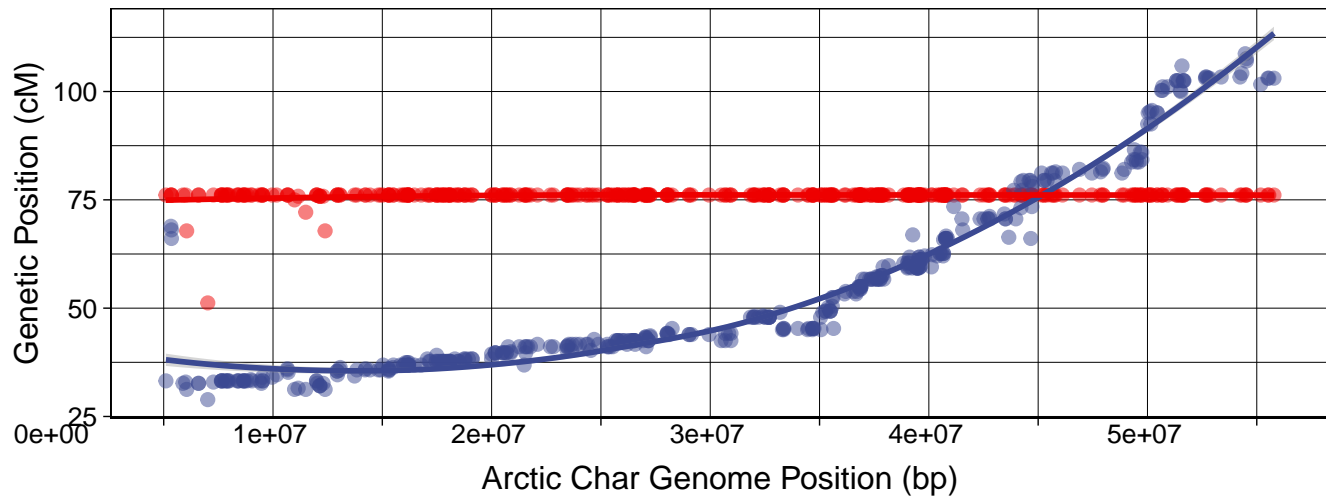
sna7 vs. NC_036867.1



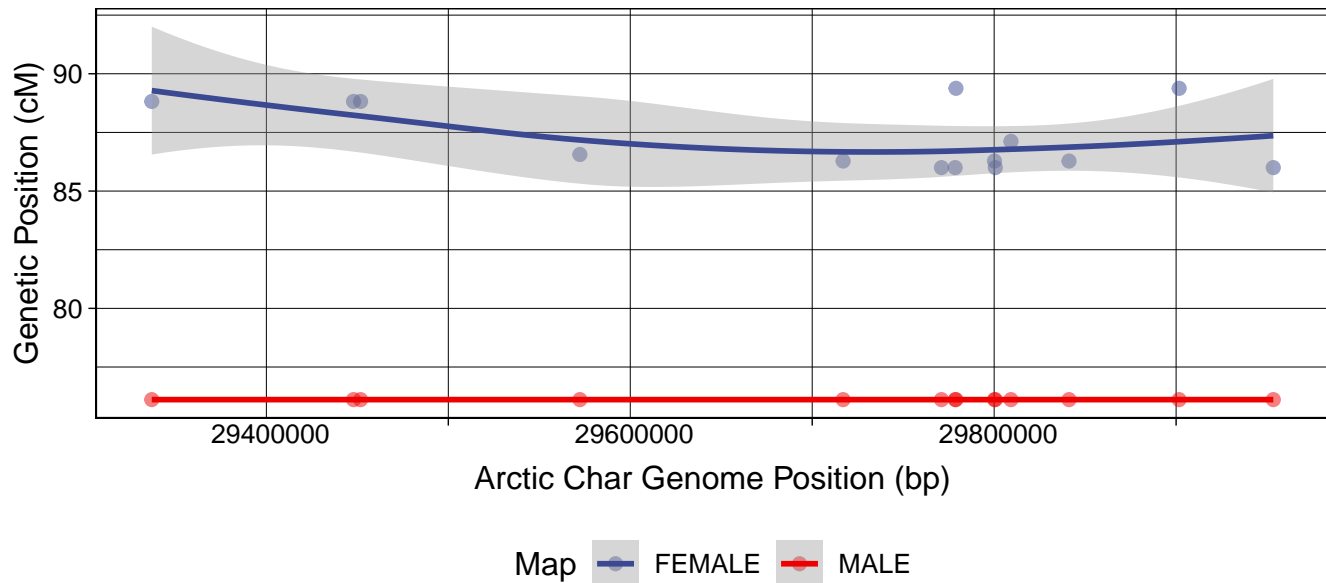
sna7 vs. NC_036852.1



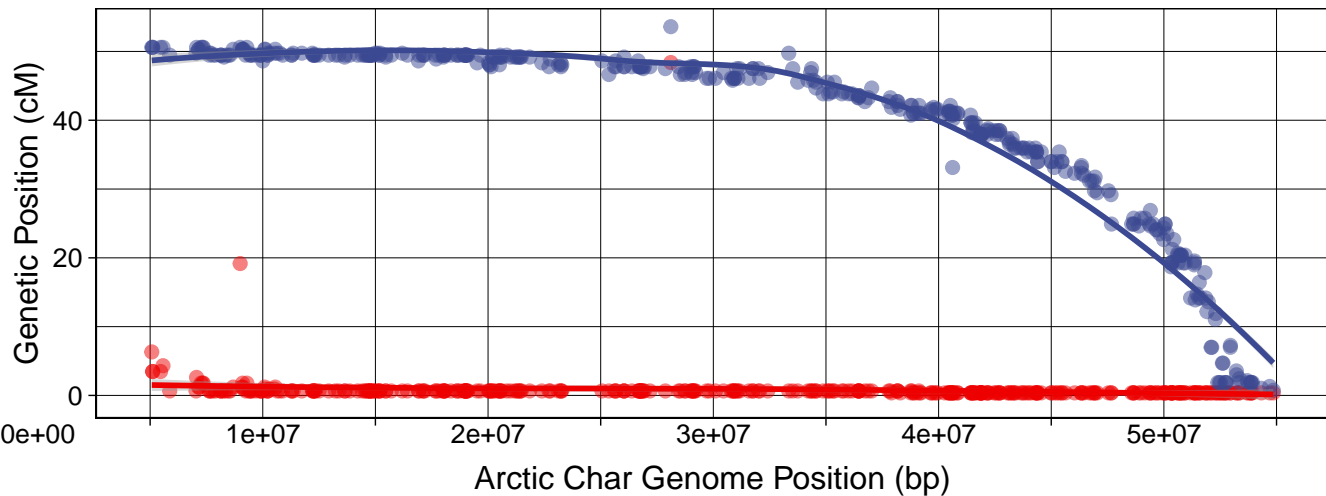
sna8 vs. NC_036853.1



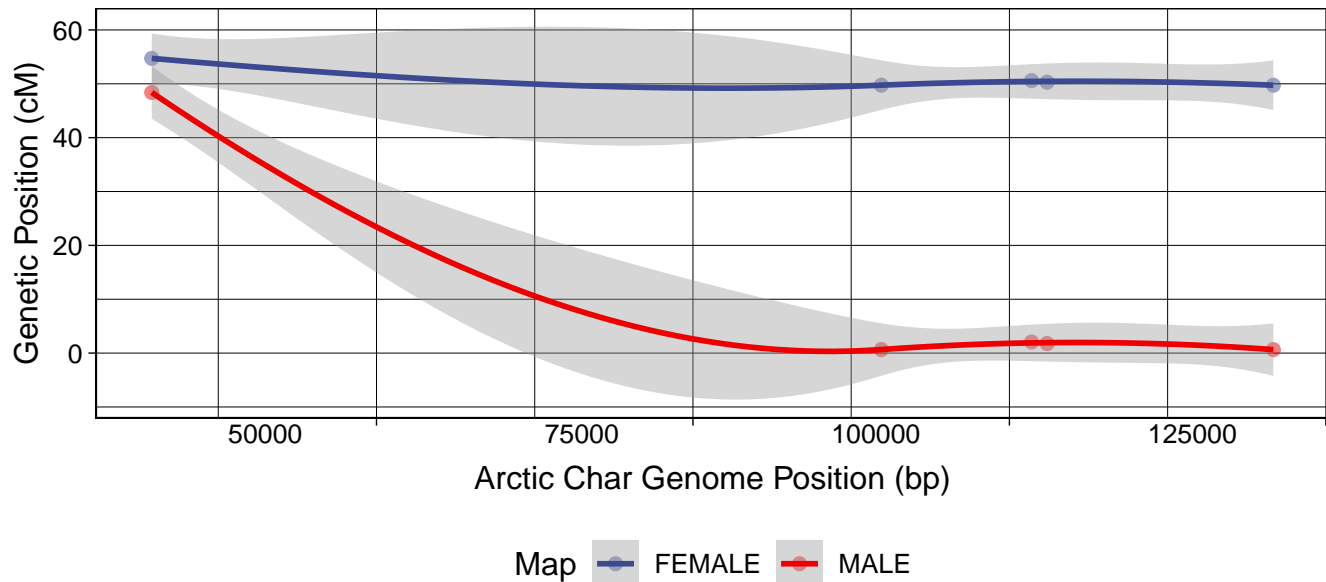
sna8 vs. NC_036838.1



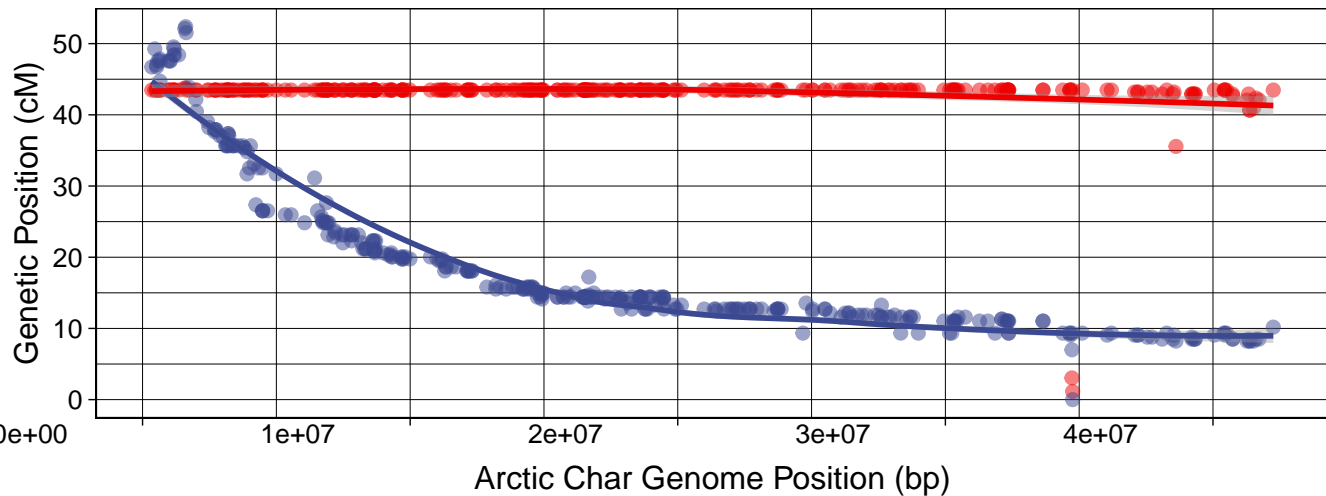
sna9 vs. NC_036866.1



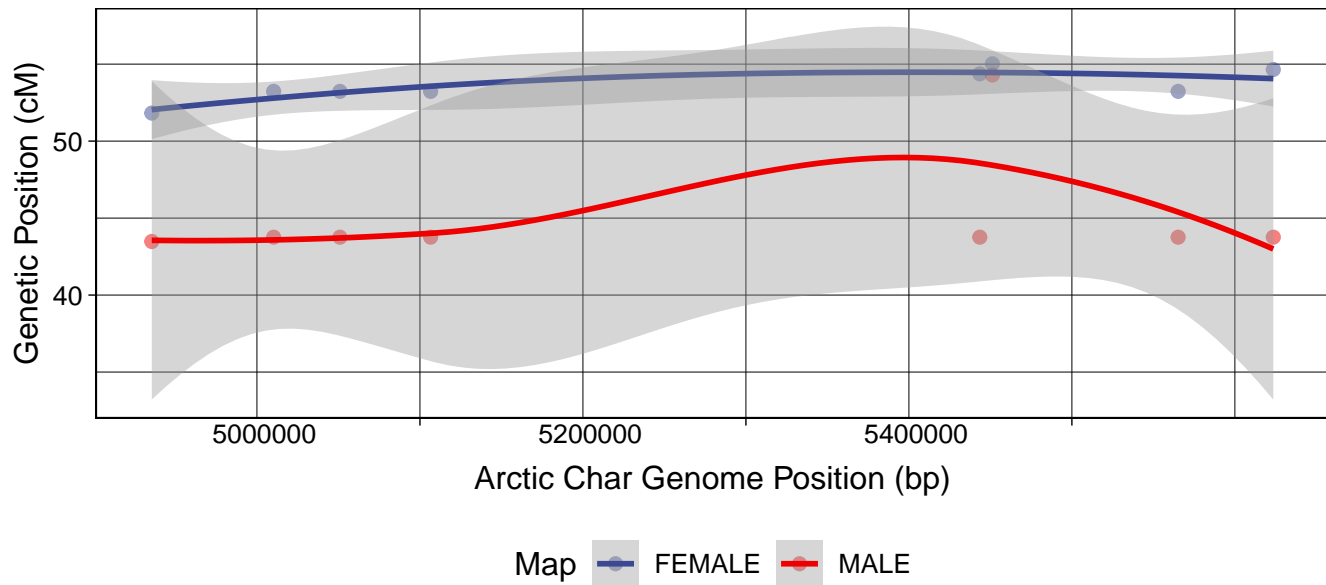
sna9 vs. NW_019942811.1



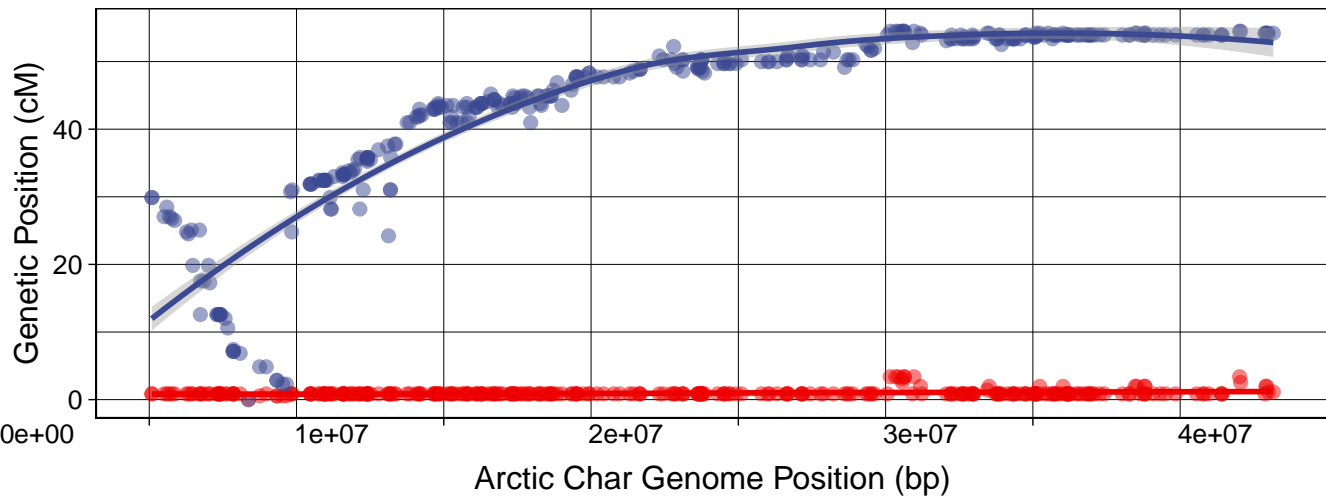
sna10 vs. NC_036856.1



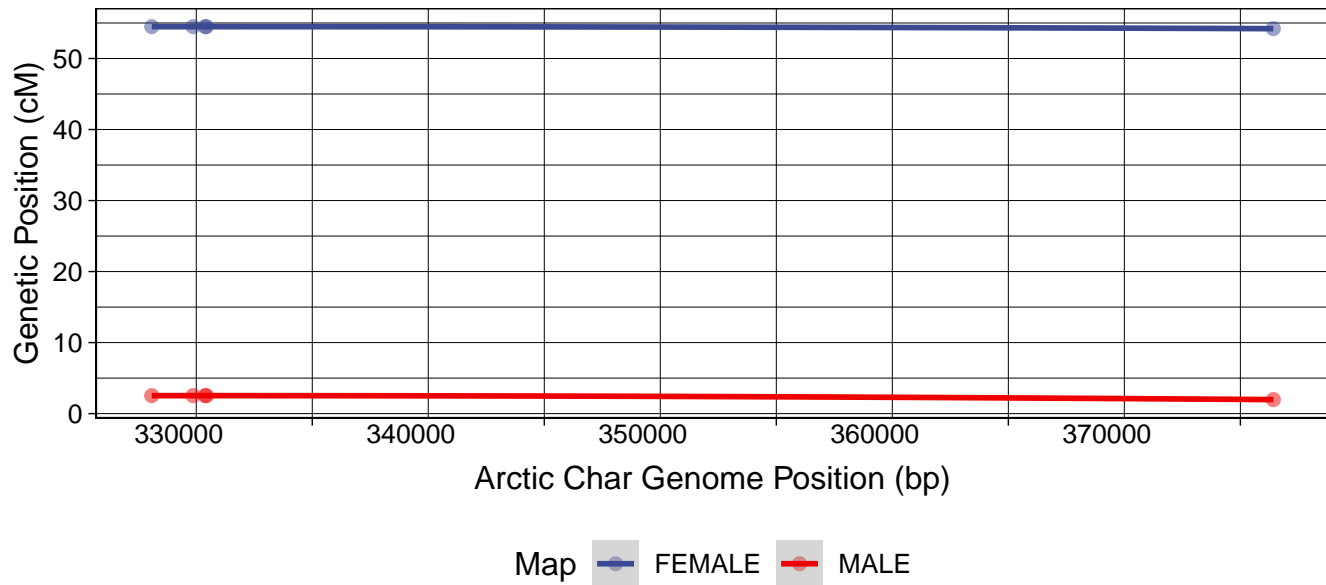
sna10 vs. NC_036843.1



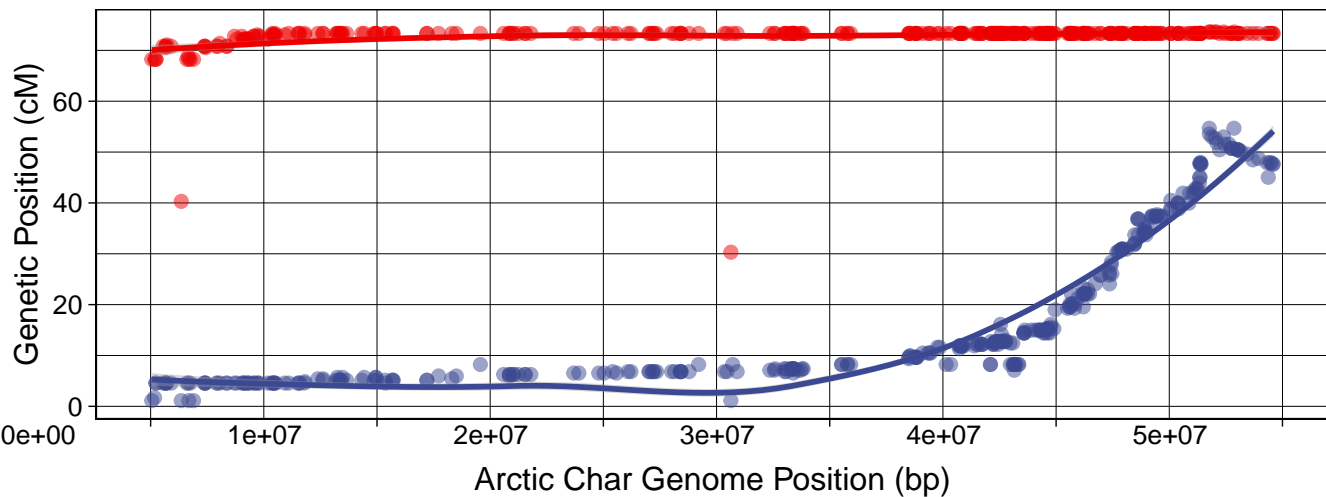
sna11 vs. NC_036871.1



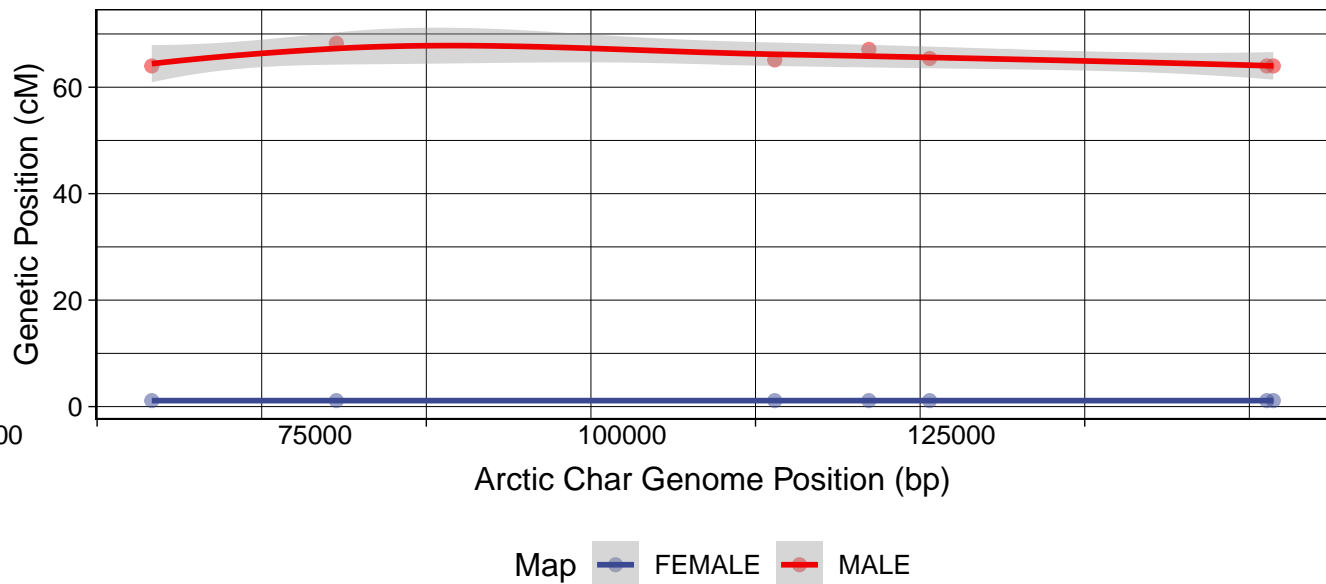
sna11 vs. NW_019942692.1



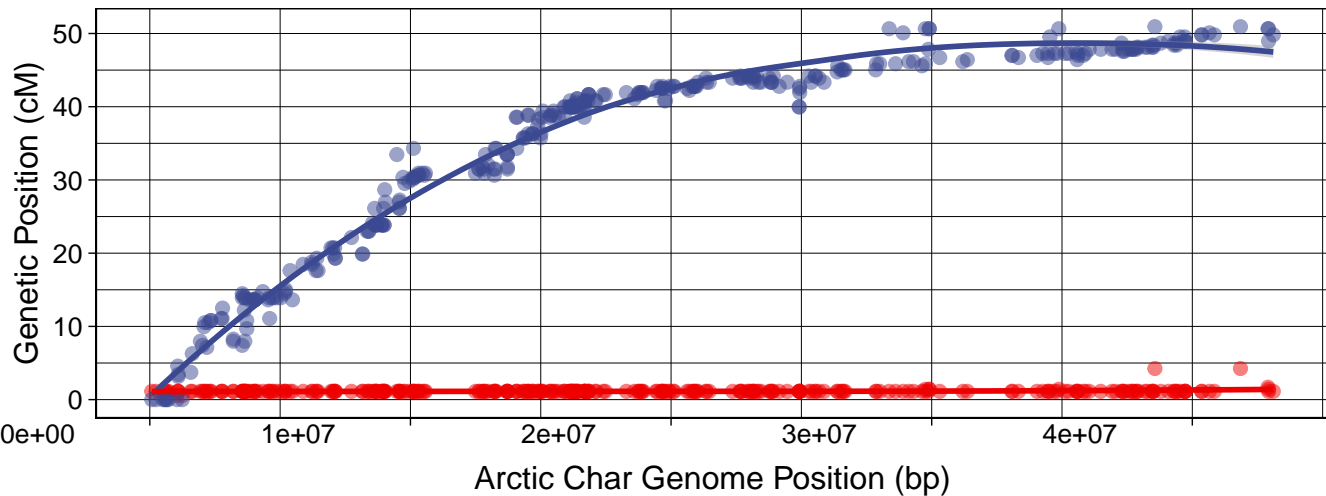
sna12 vs. NC_036863.1



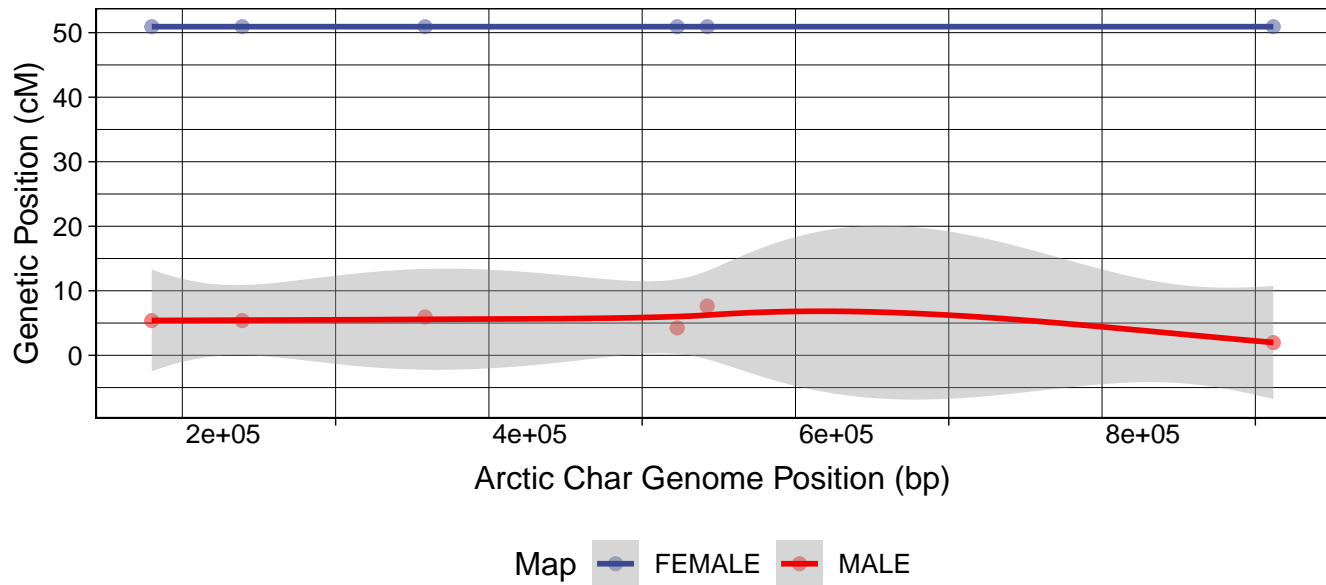
sna12 vs. NW_019943072.1



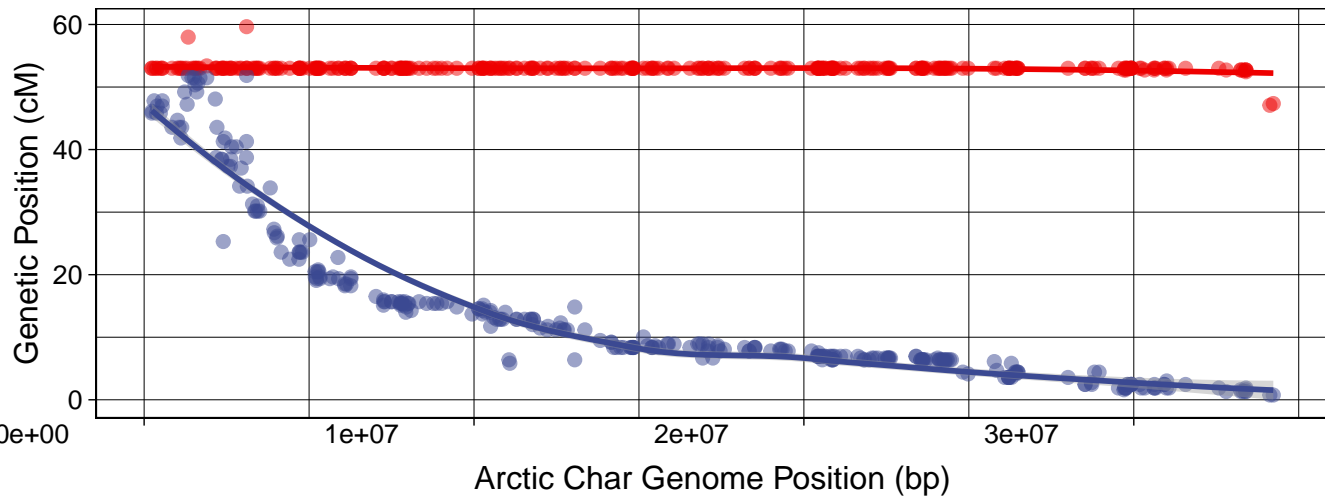
sna13 vs. NC_036839.1



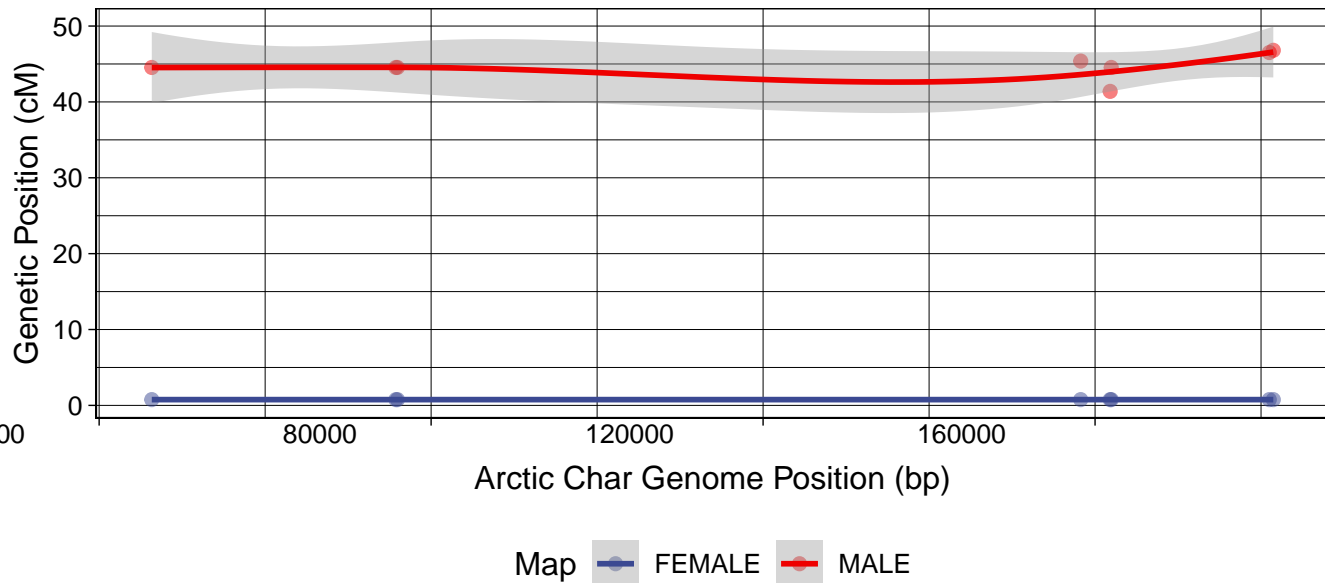
sna13 vs. NW_019942557.1



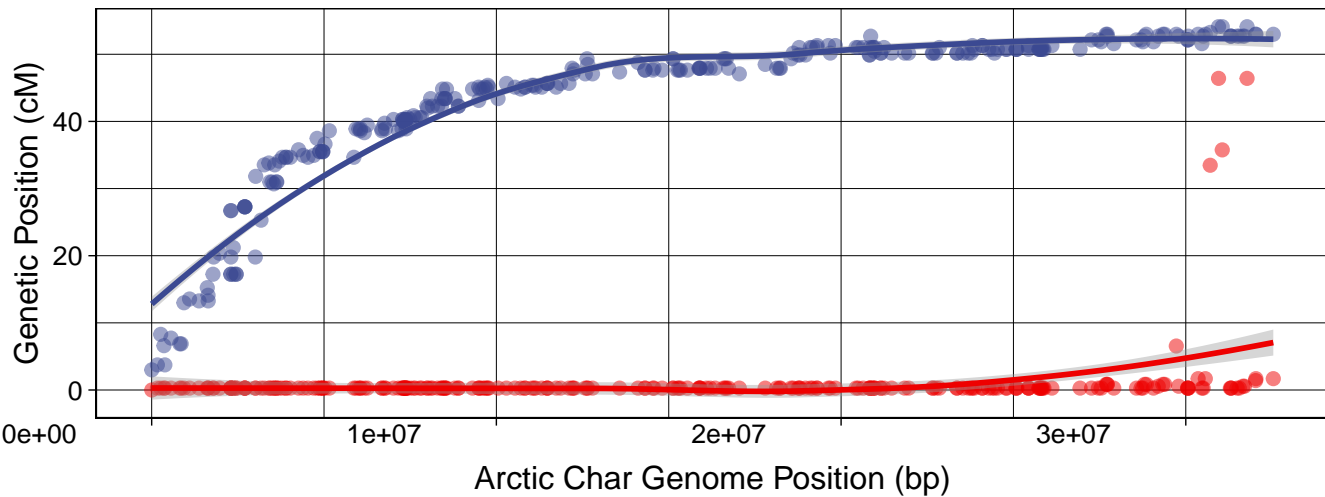
sna14 vs. NC_036847.1



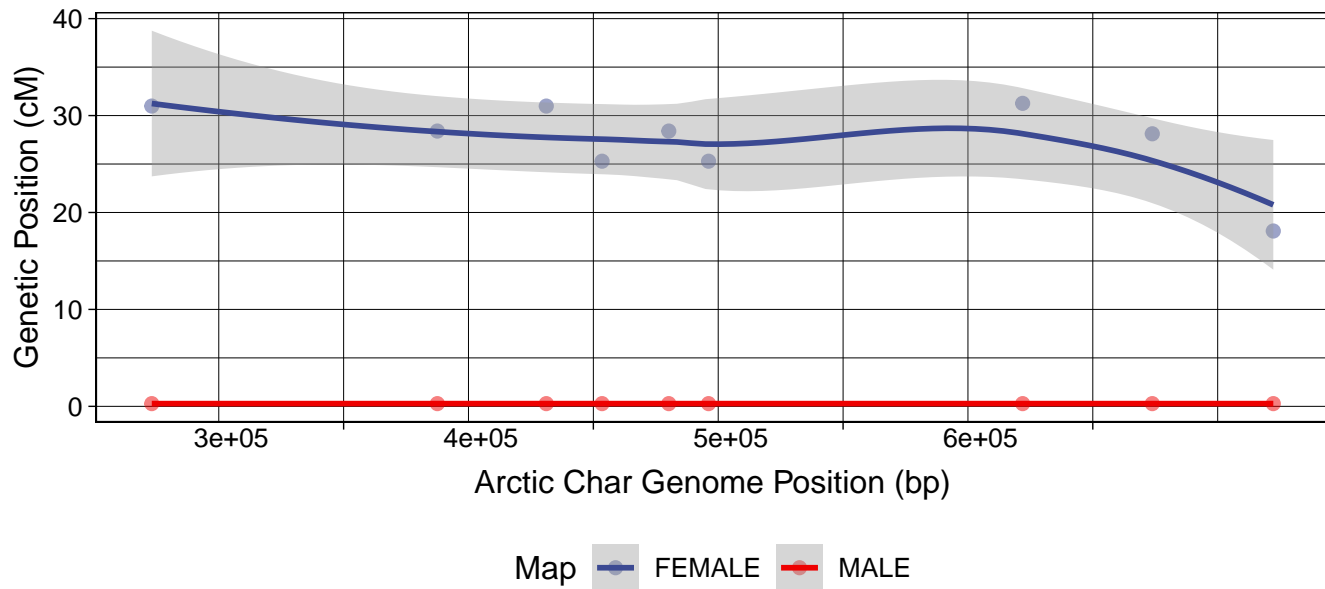
sna14 vs. NW_019942696.1



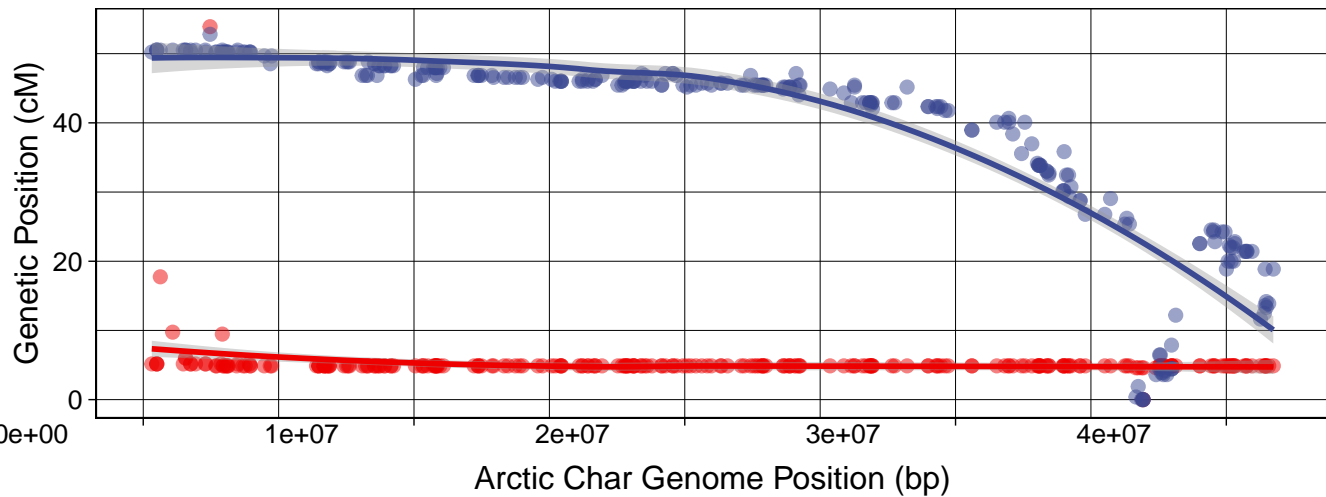
sna15 vs. NC_036849.1



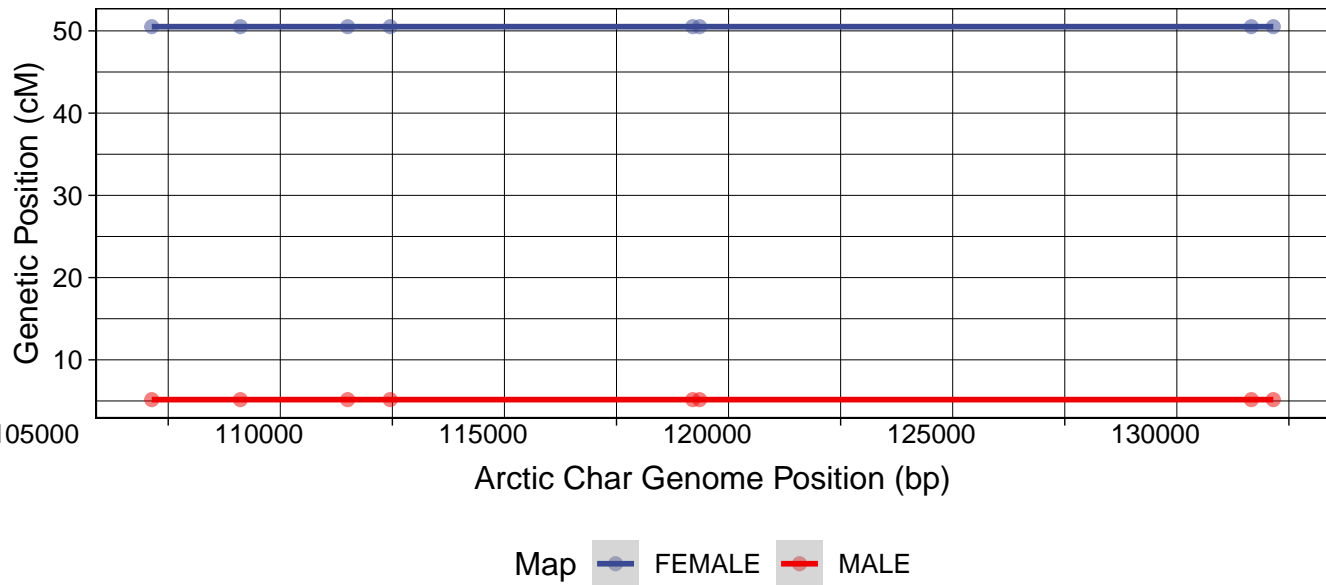
sna15 vs. NW_019942507.1



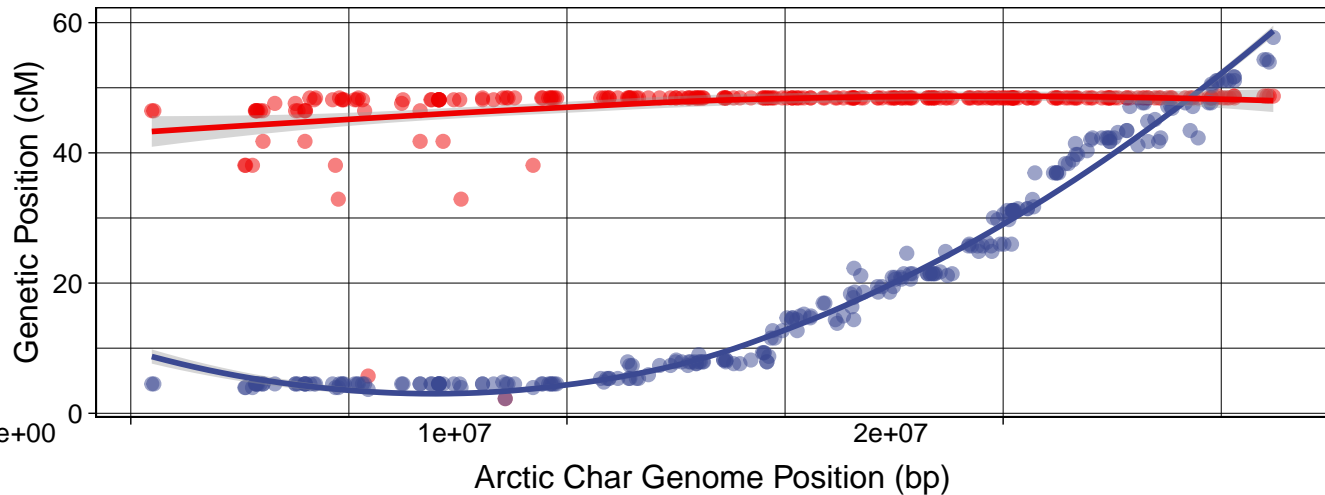
sna16 vs. NC_036857.1



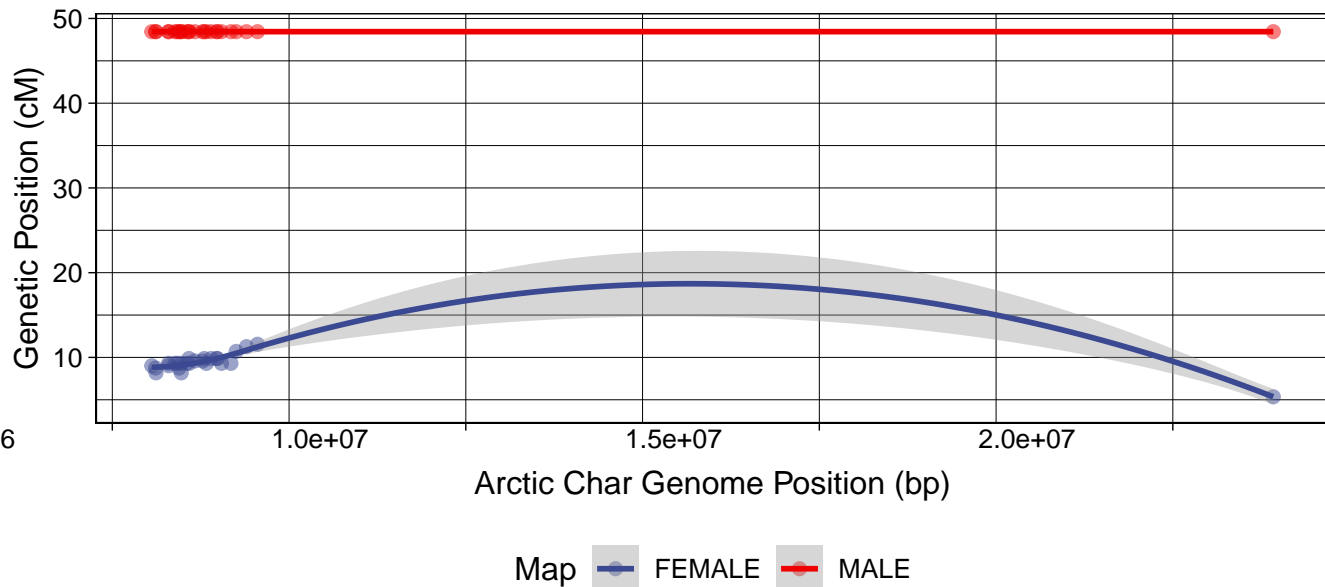
sna16 vs. NW_019943867.1



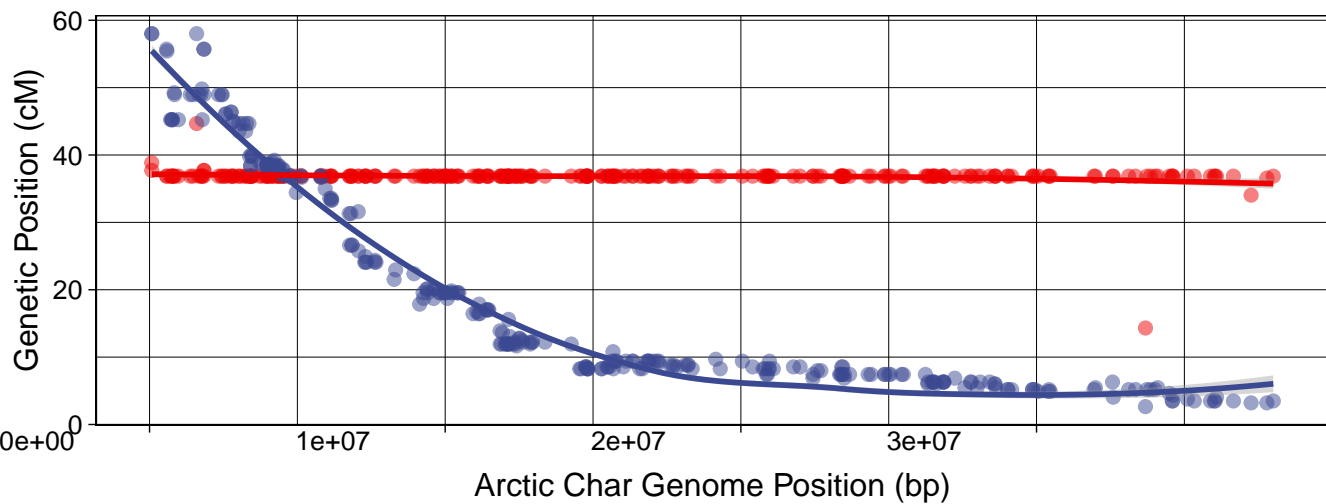
sna17 vs. NC_036848.1



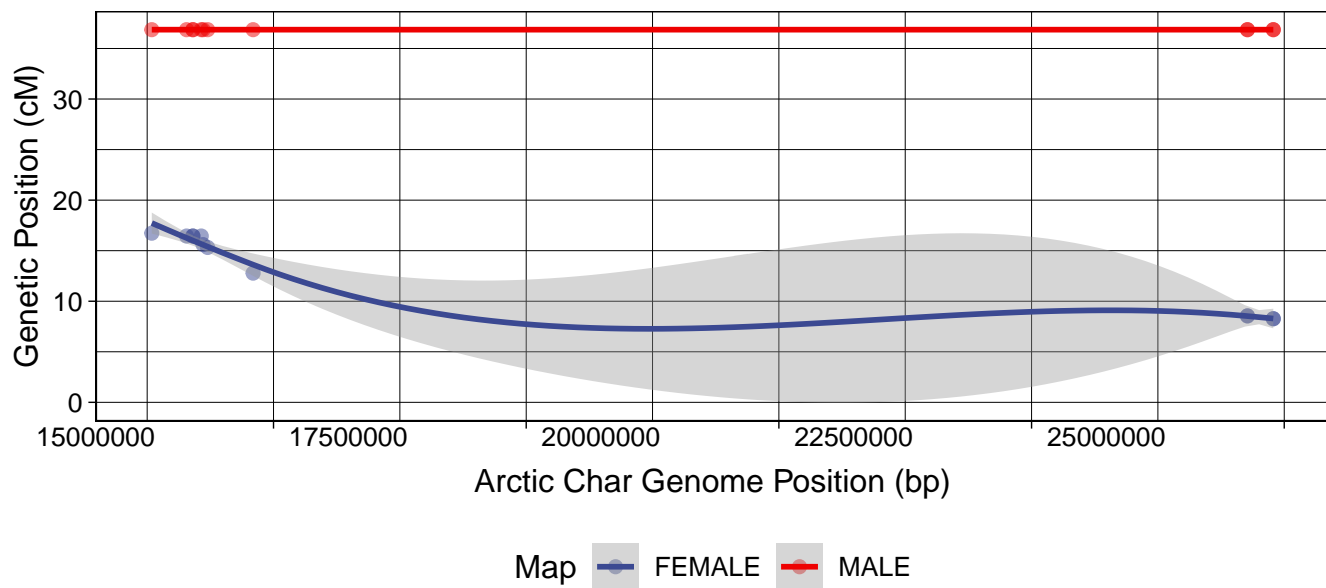
sna17 vs. NC_036846.1



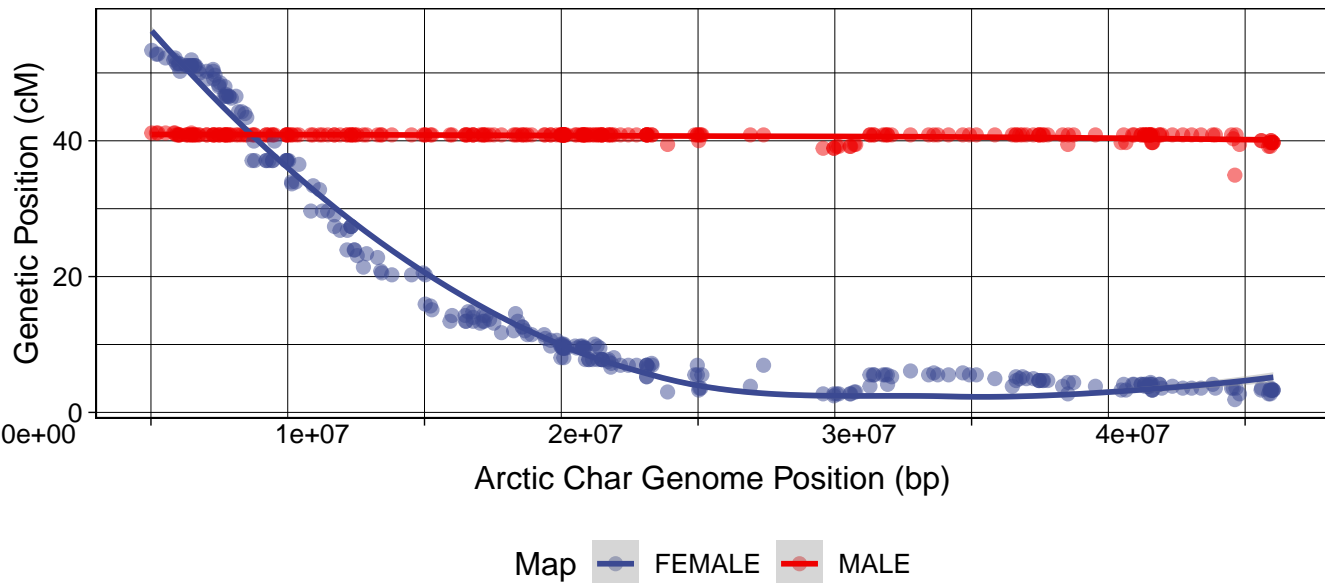
sna18 vs. NC_036872.1



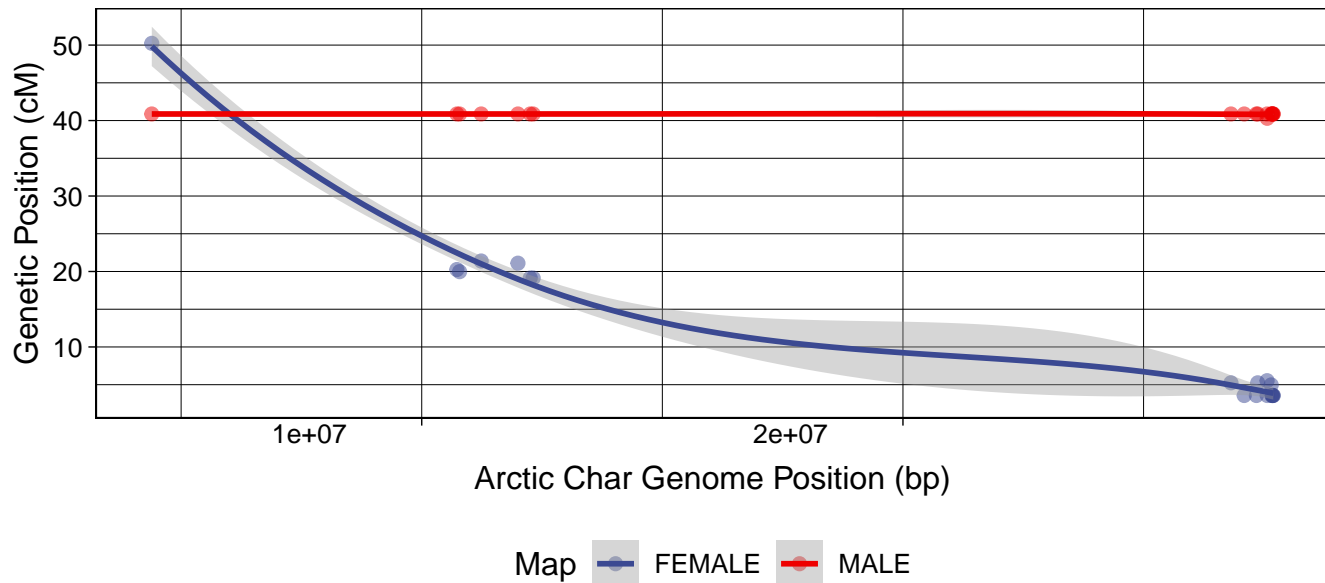
sna18 vs. NC_036855.1



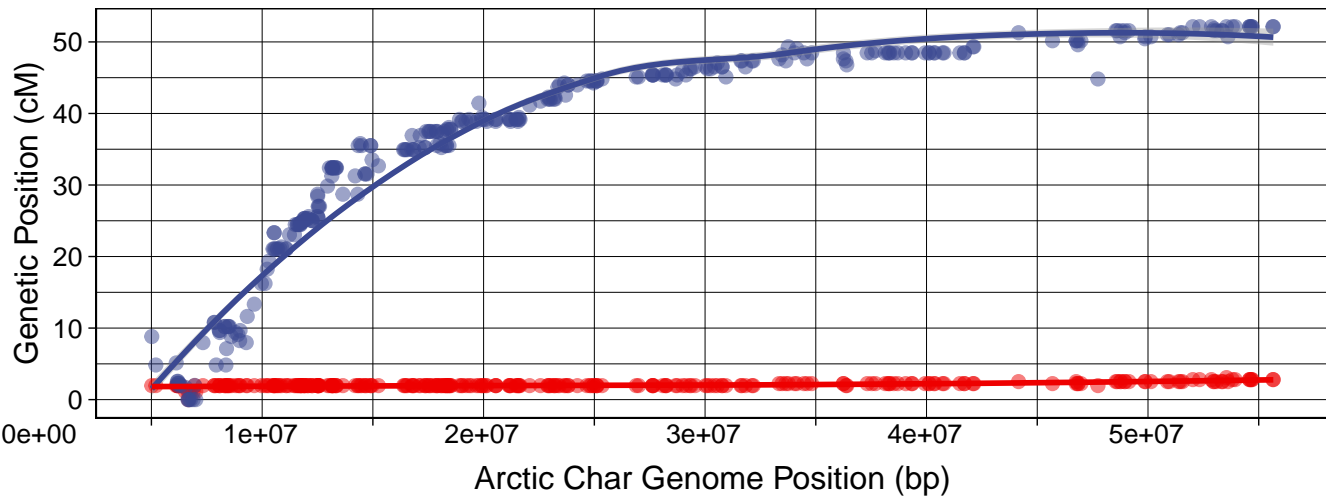
sna19 vs. NC_036875.1



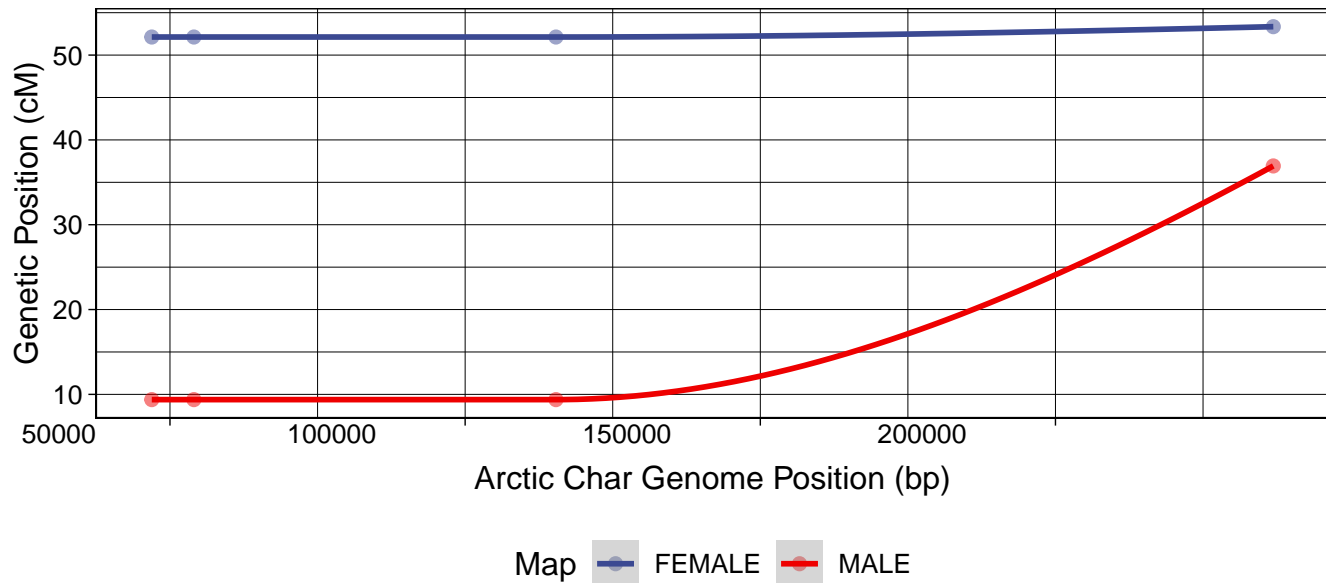
sna19 vs. NC_036839.1



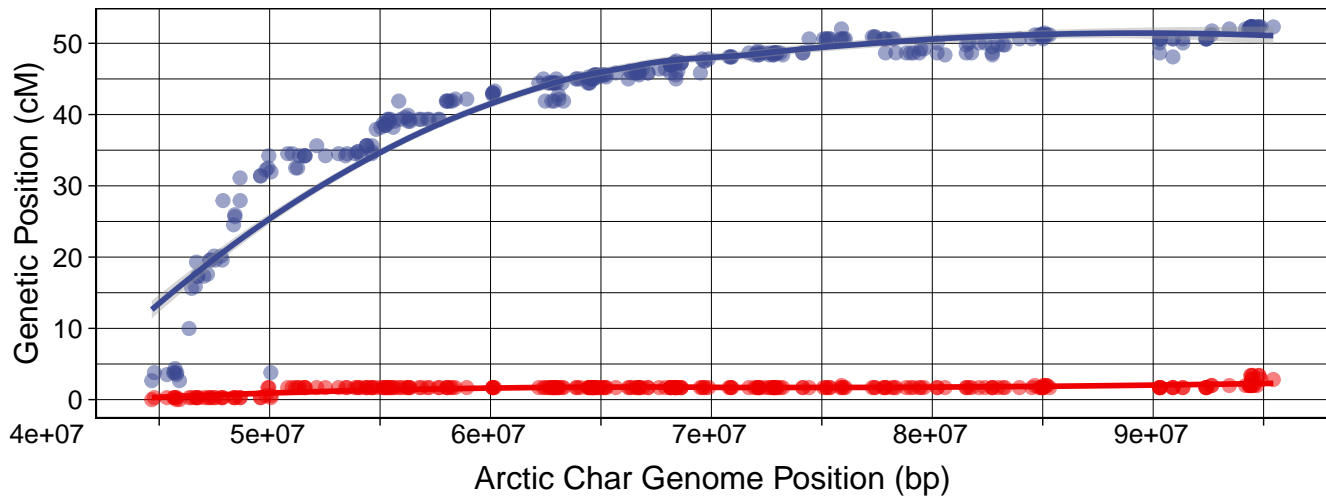
sna20 vs. NC_036851.1



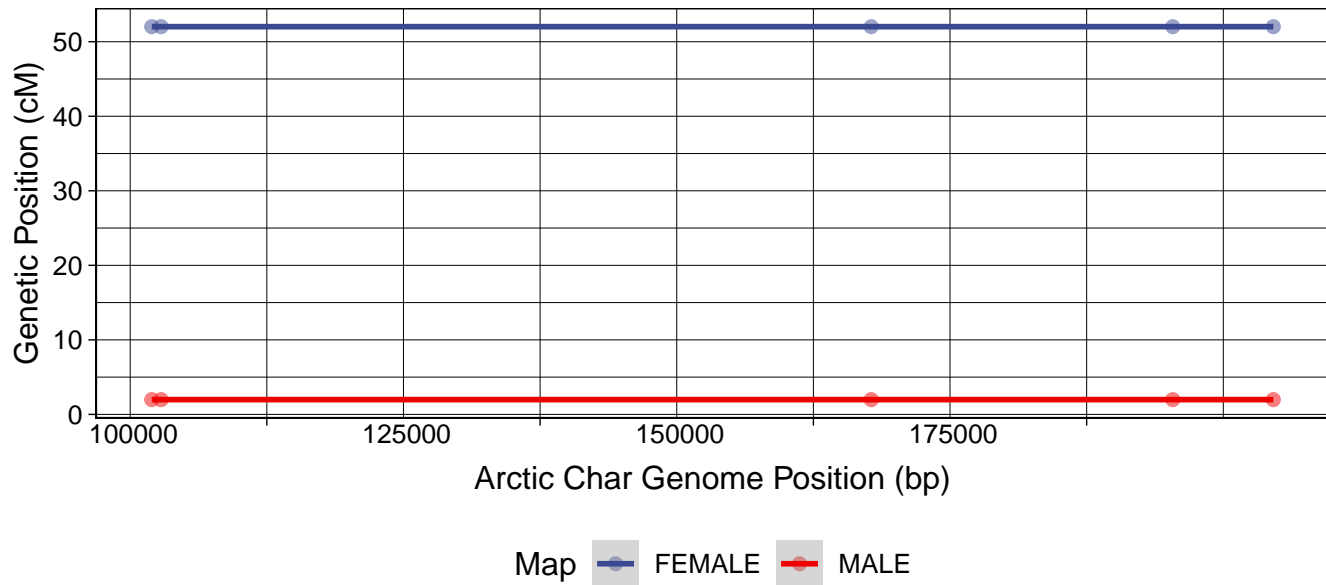
sna20 vs. NW_019942923.1



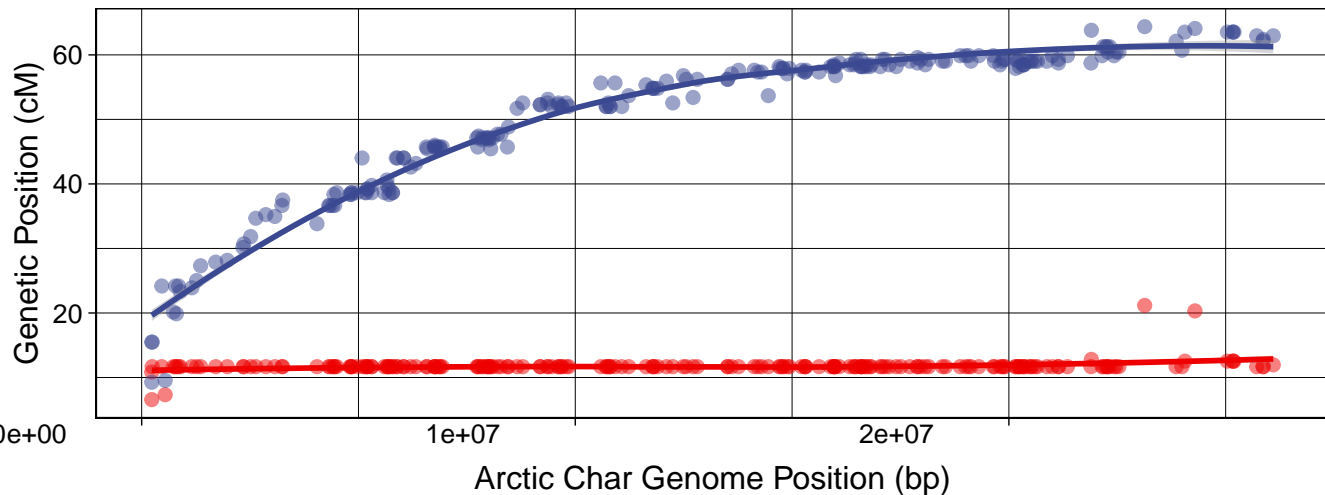
sna21 vs. NC_036842.1



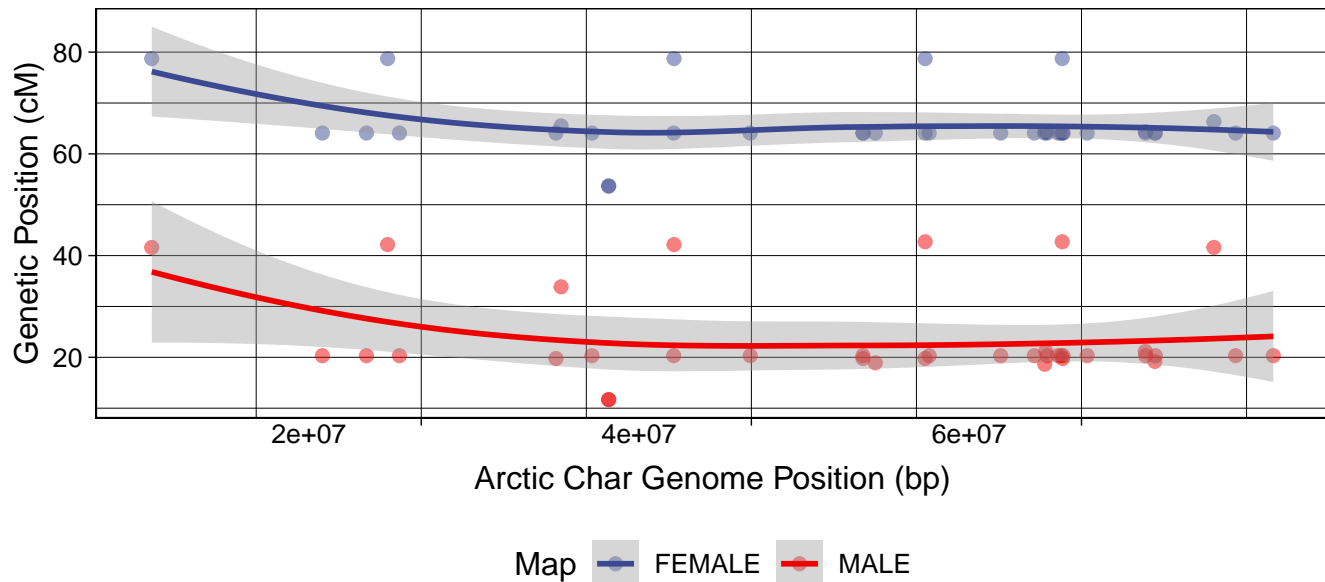
sna21 vs. NW_019942779.1



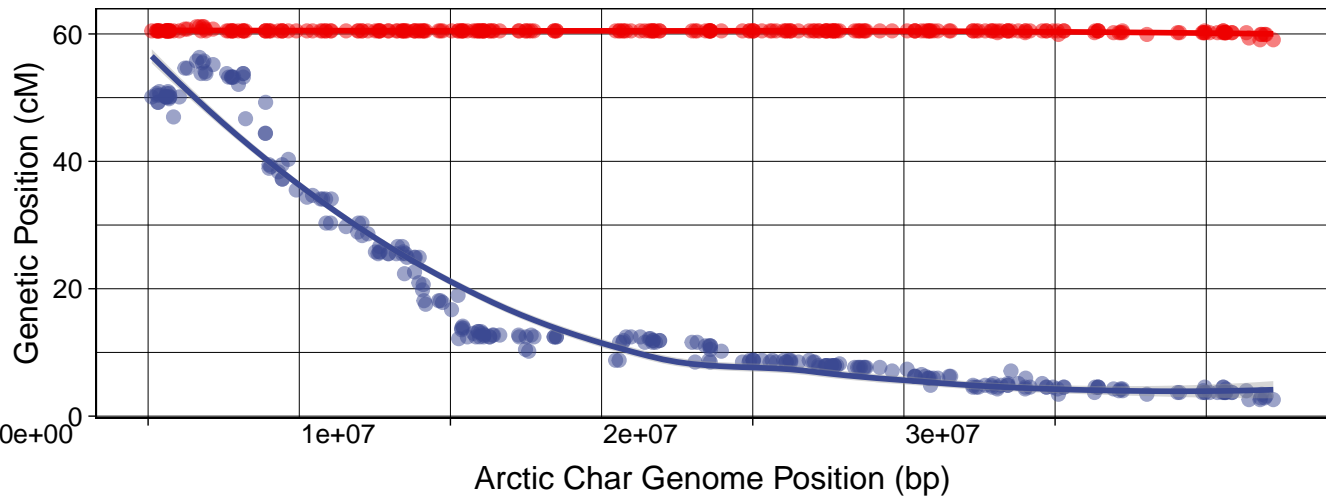
sna22 vs. NC_036865.1



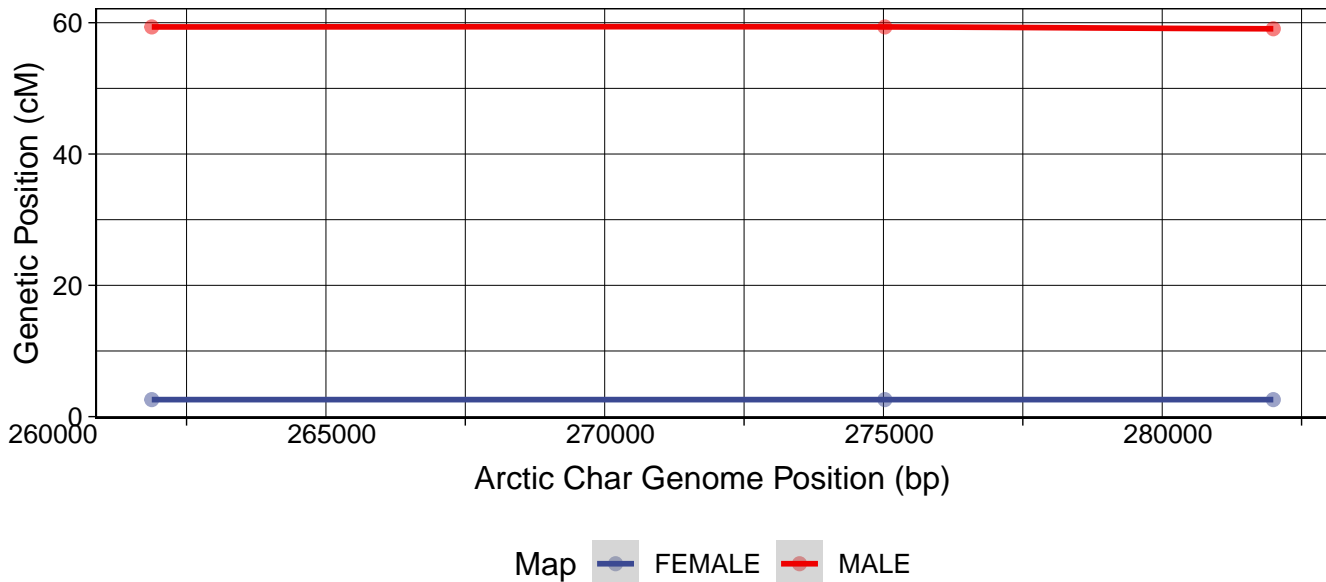
sna22 vs. NC_036858.1



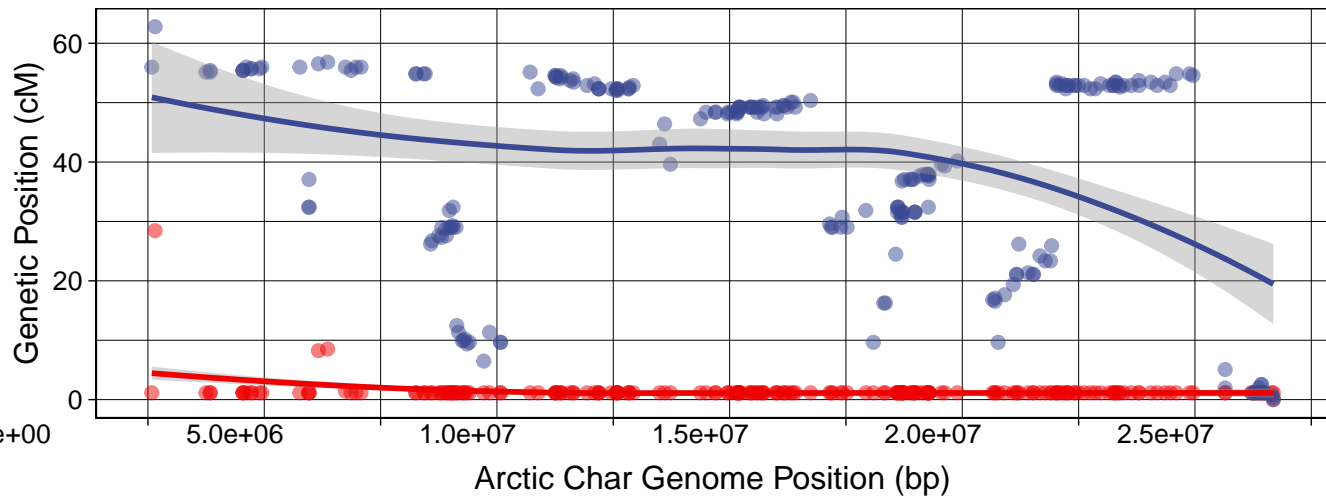
sna23 vs. NC_036862.1



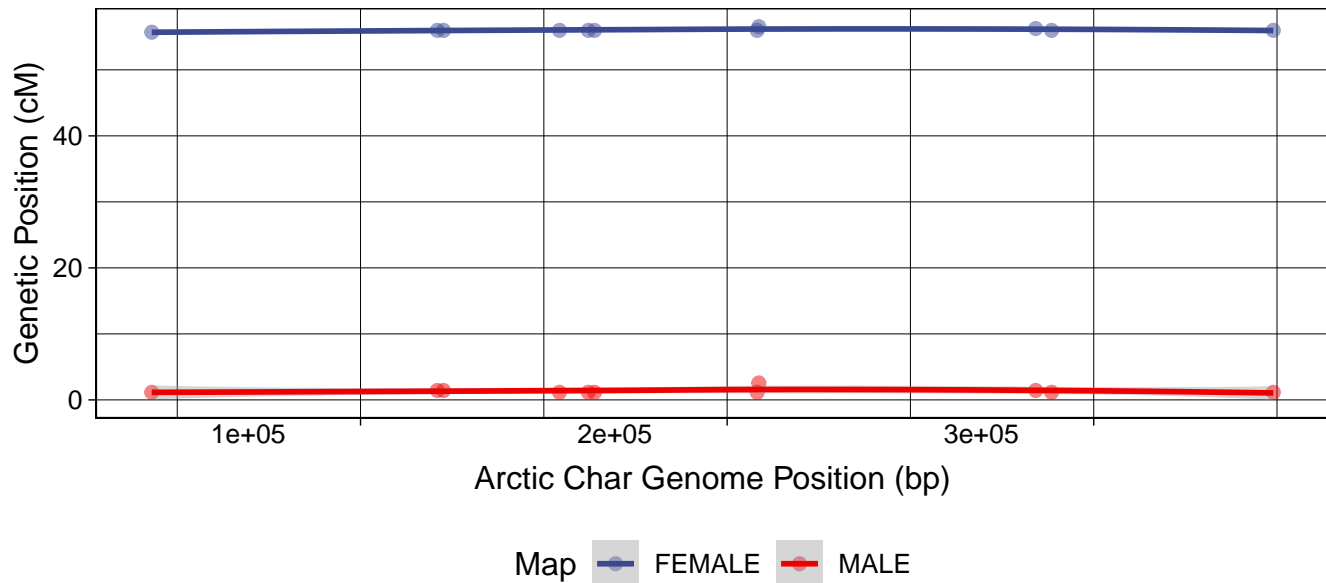
sna23 vs. NW_019943239.1



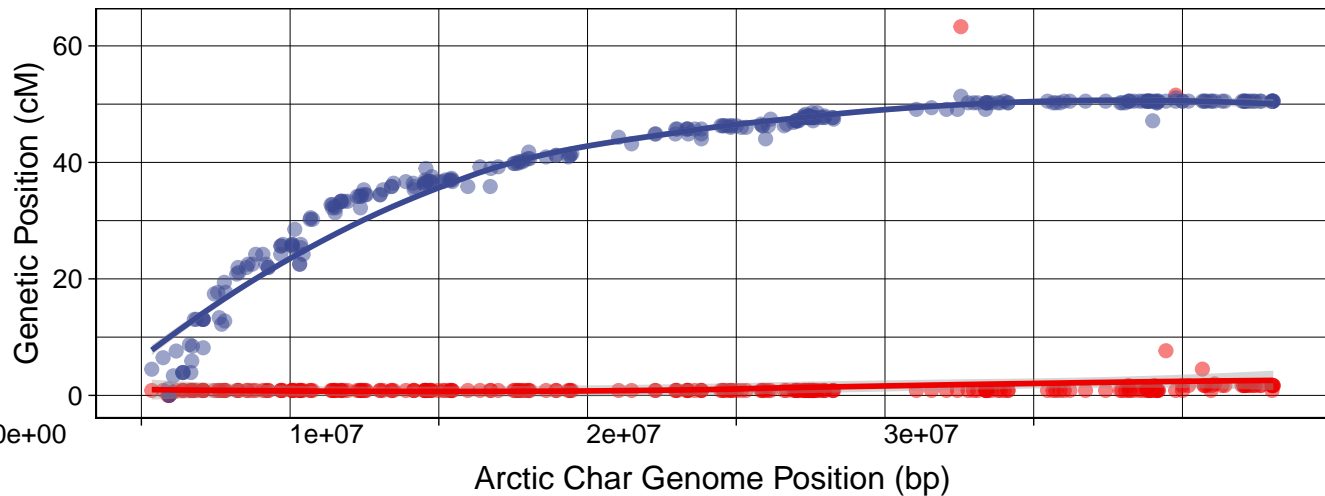
sna24 vs. NC_036854.1



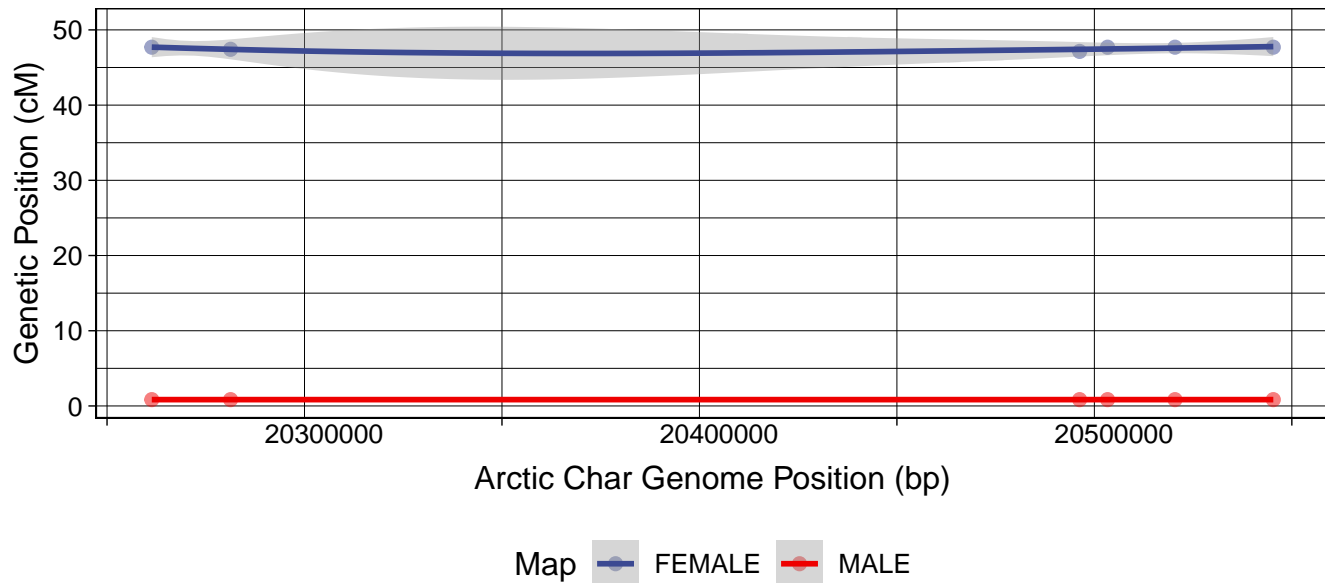
sna24 vs. NW_019942639.1



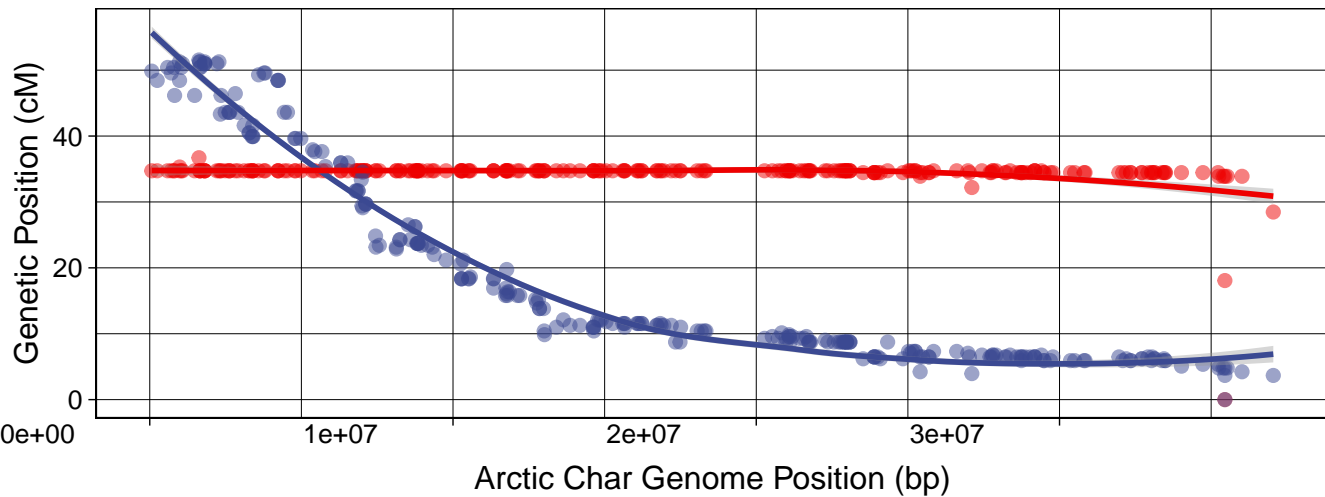
sna25 vs. NC_036859.1



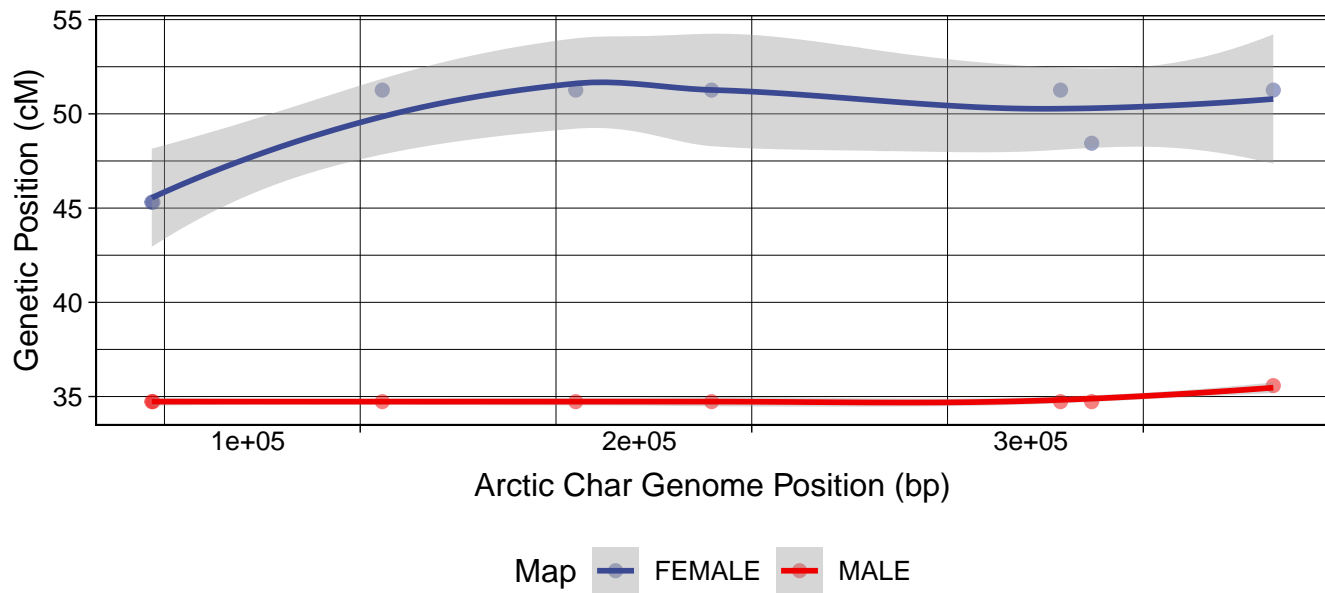
sna25 vs. NC_036871.1



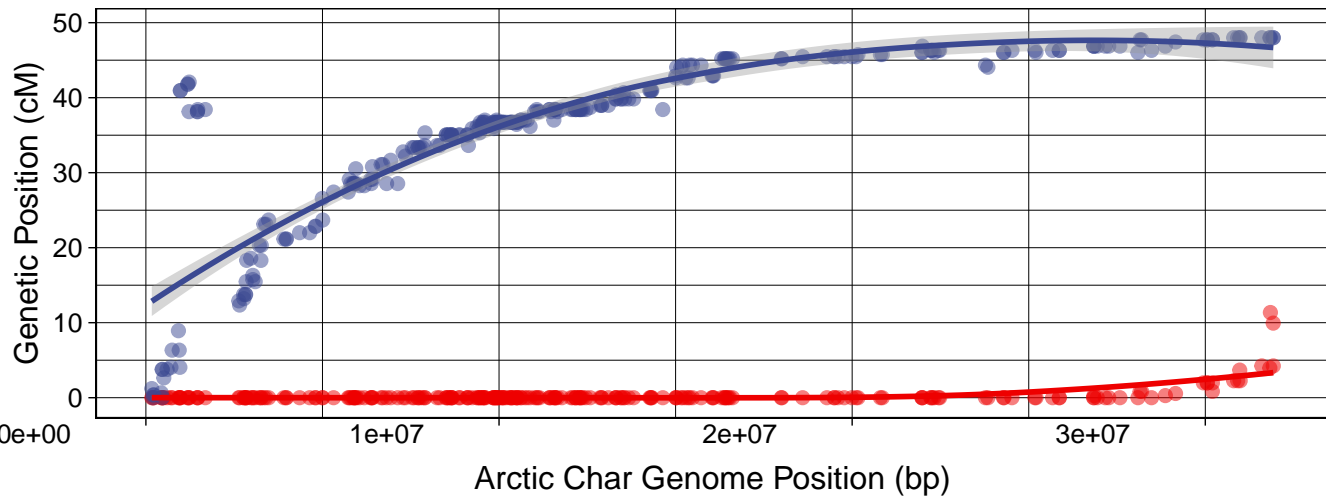
sna26 vs. NC_036844.1



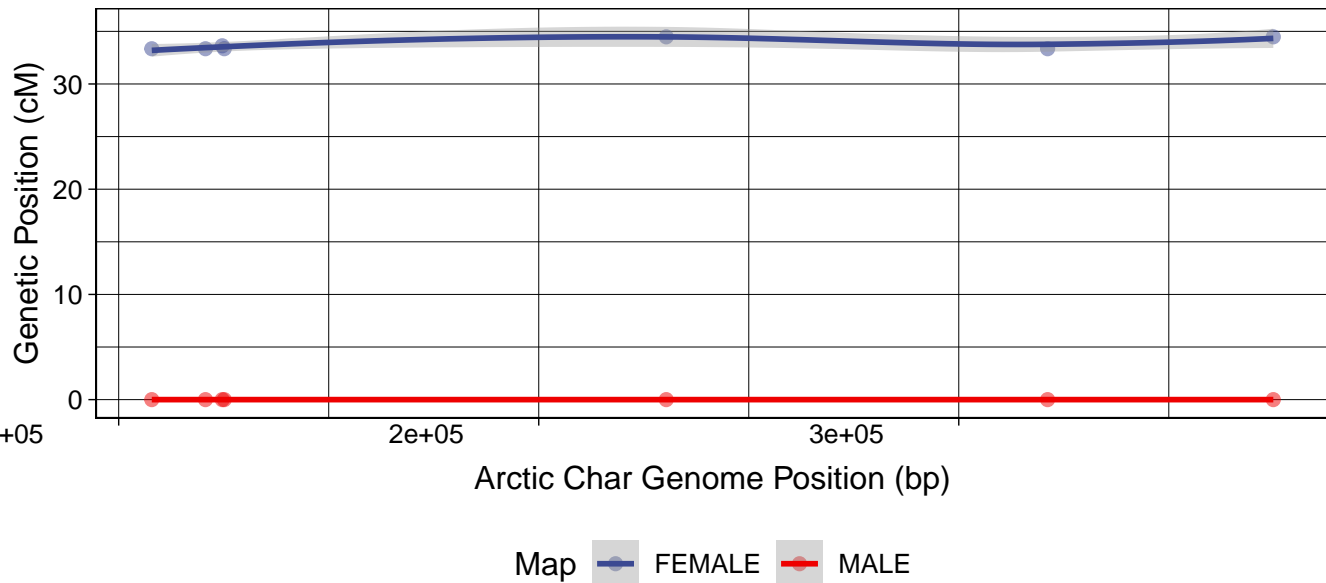
sna26 vs. NW_019957576.1



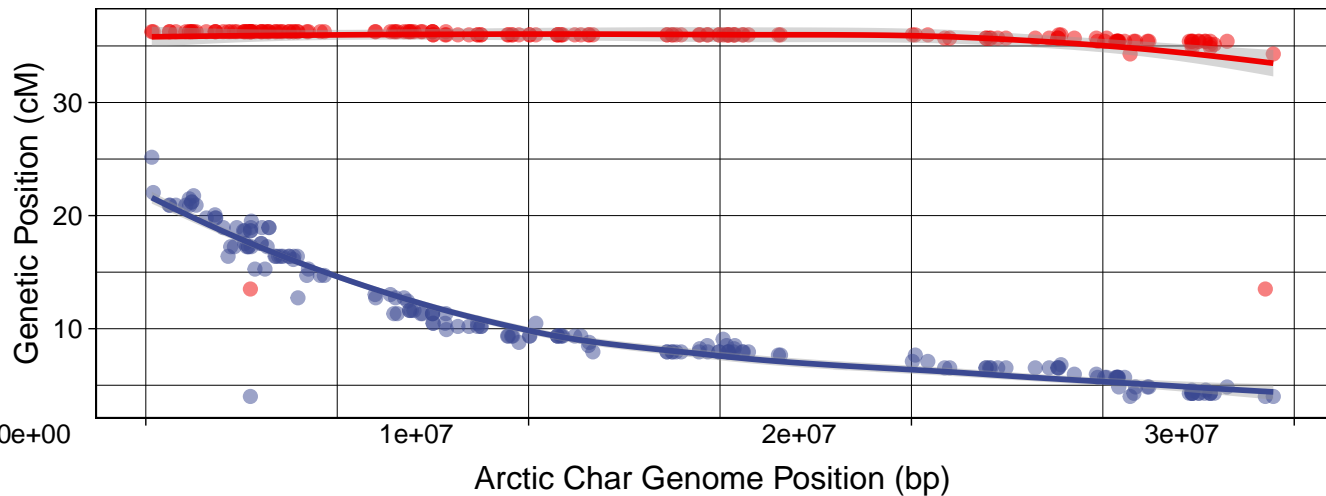
sna27 vs. NC_036870.1



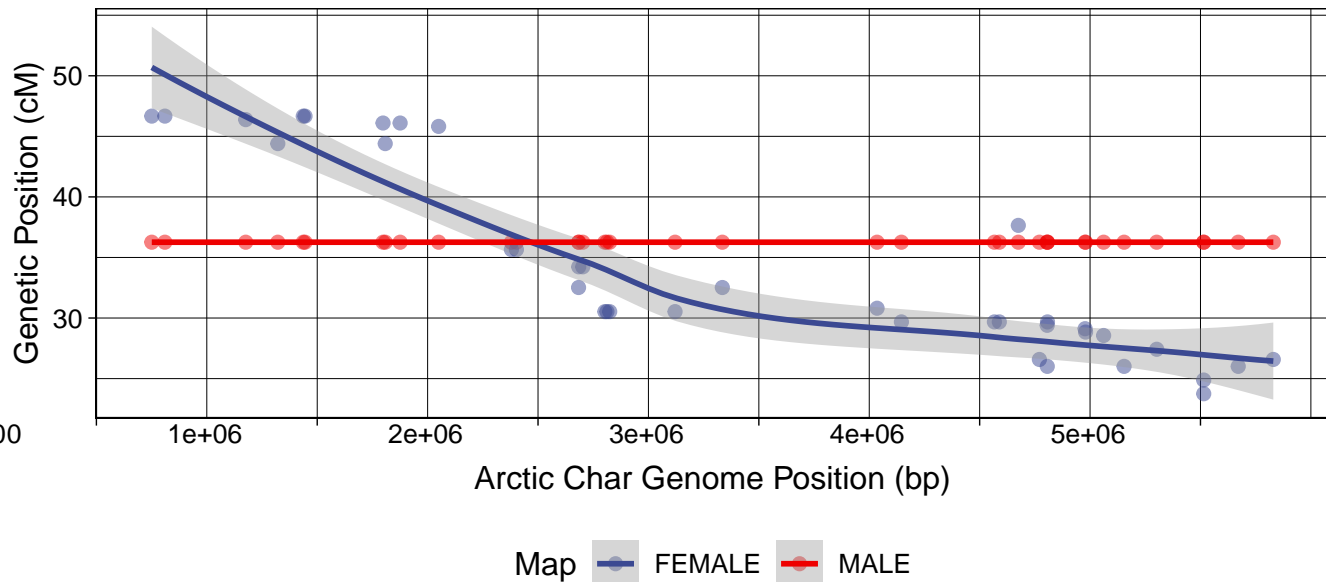
sna27 vs. NW_019942677.1



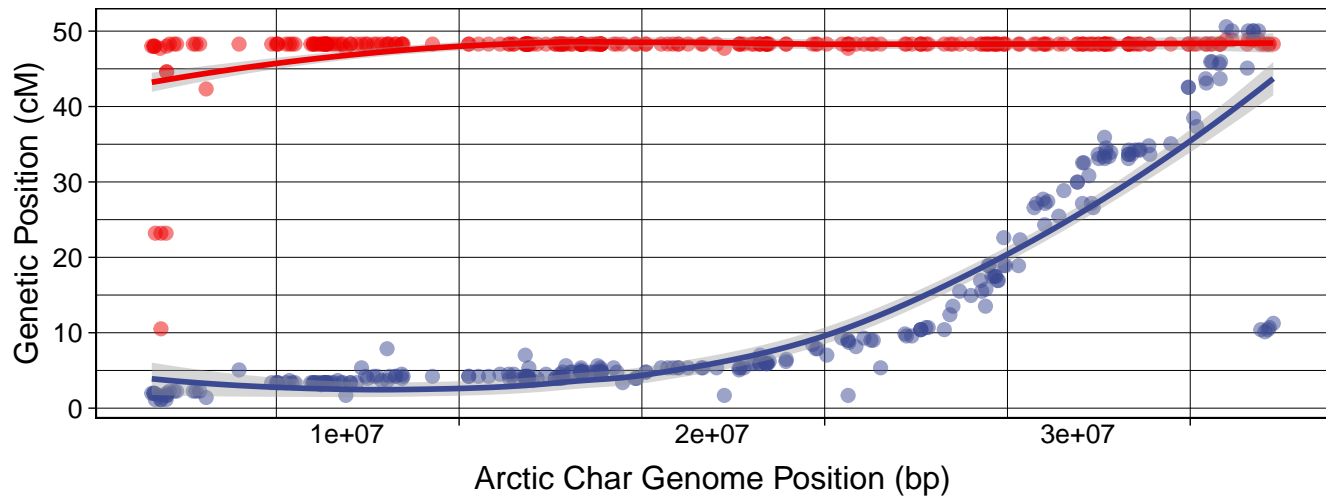
sna28 vs. NC_036843.1



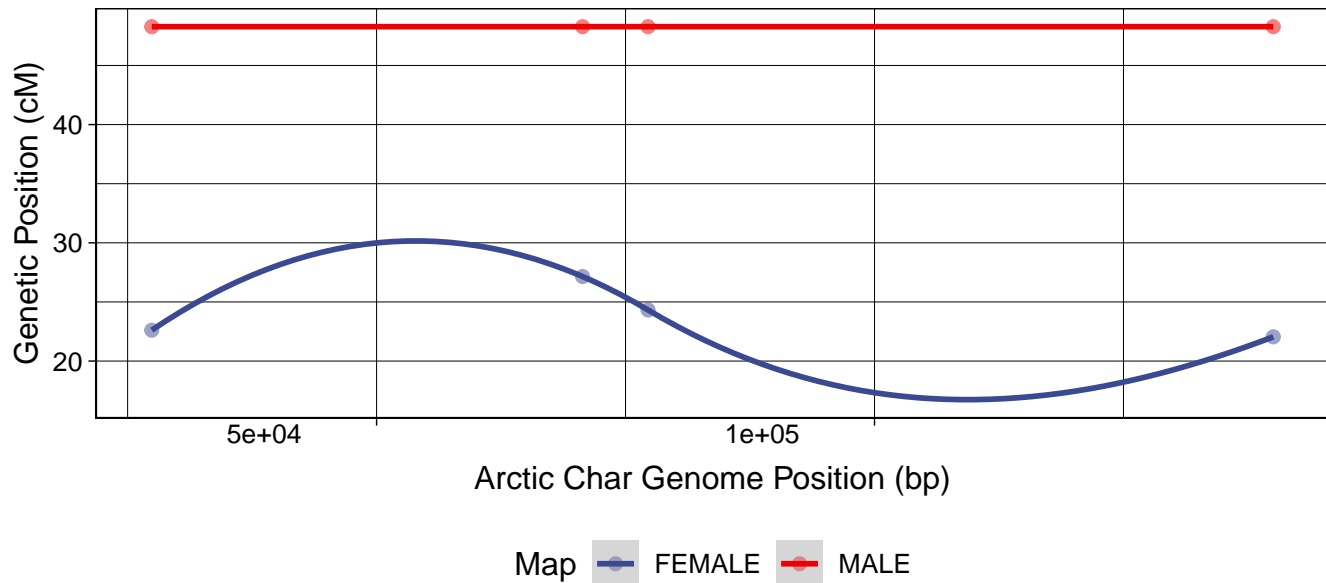
sna28 vs. NW_019942514.1



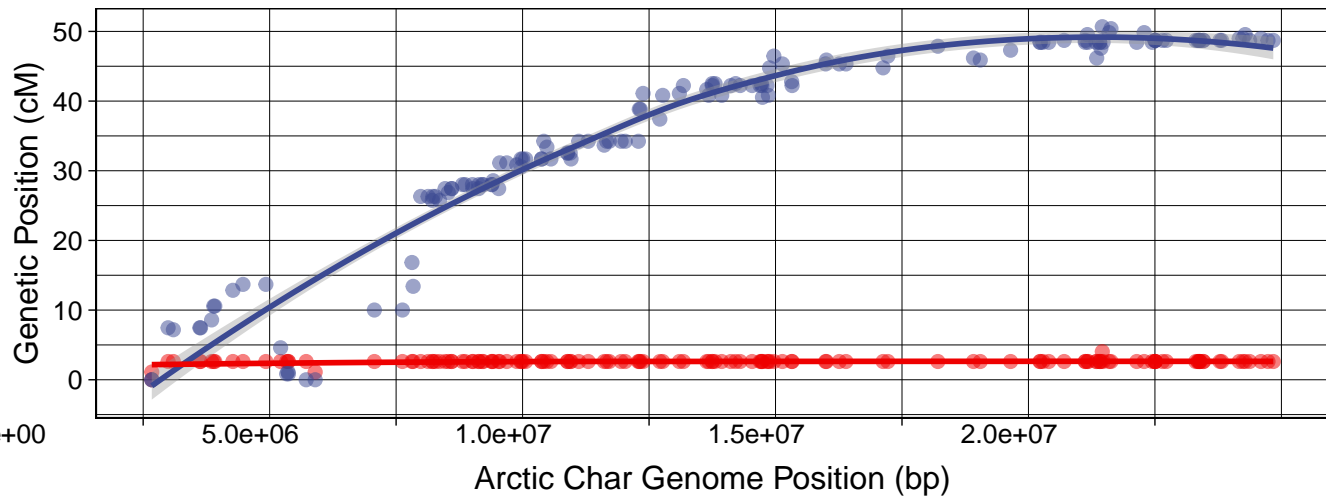
sna29 vs. NC_036868.1



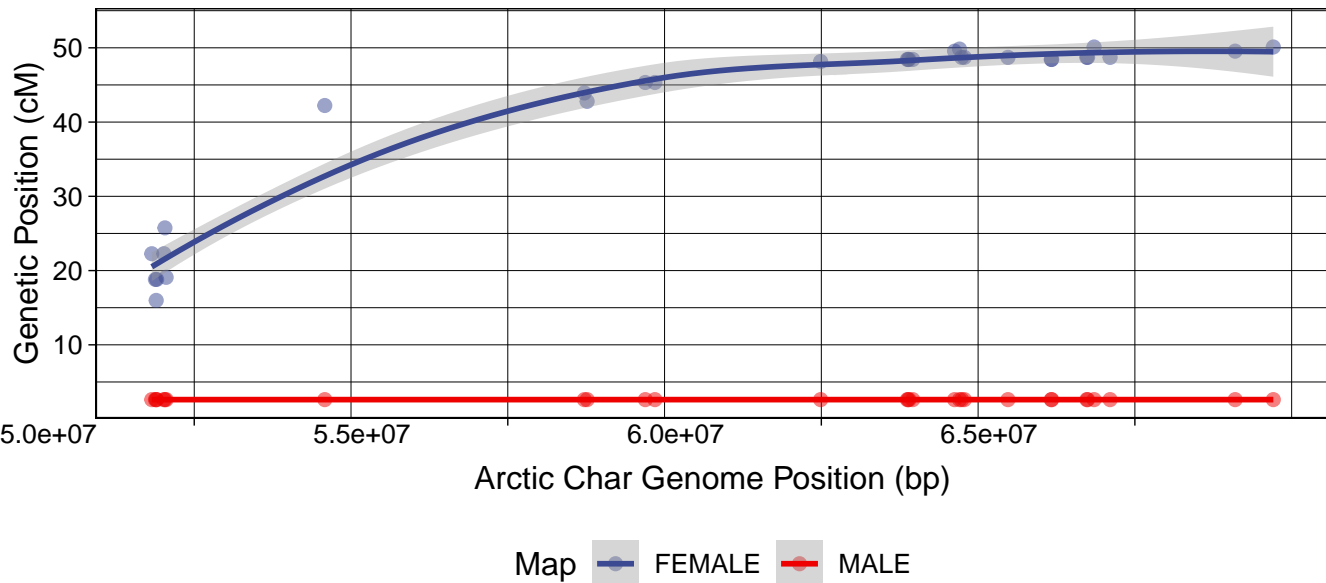
sna29 vs. NW_019943177.1



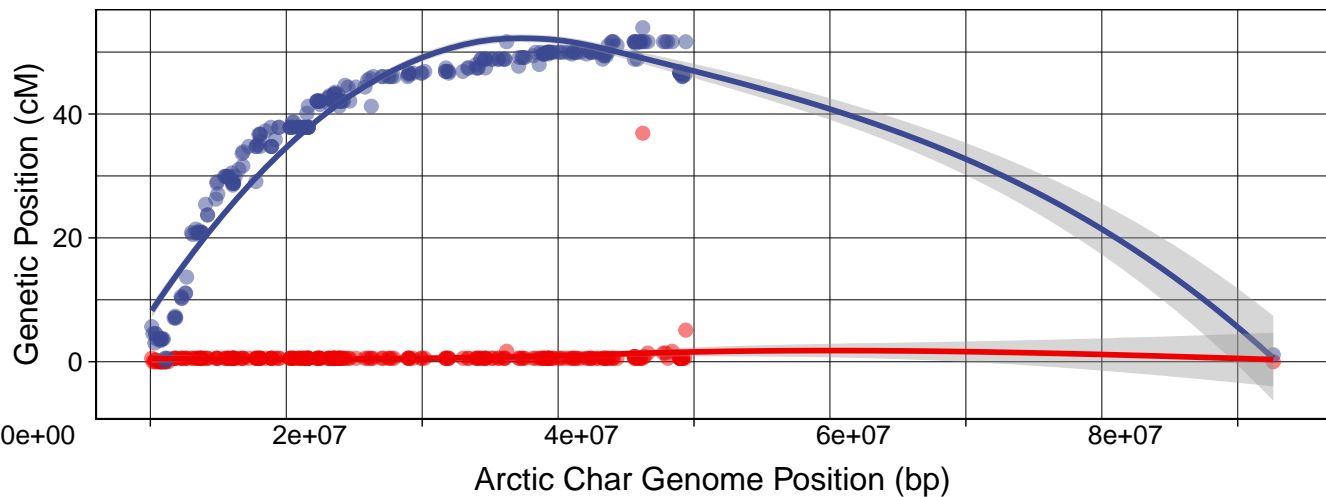
sna30 vs. NC_036850.1



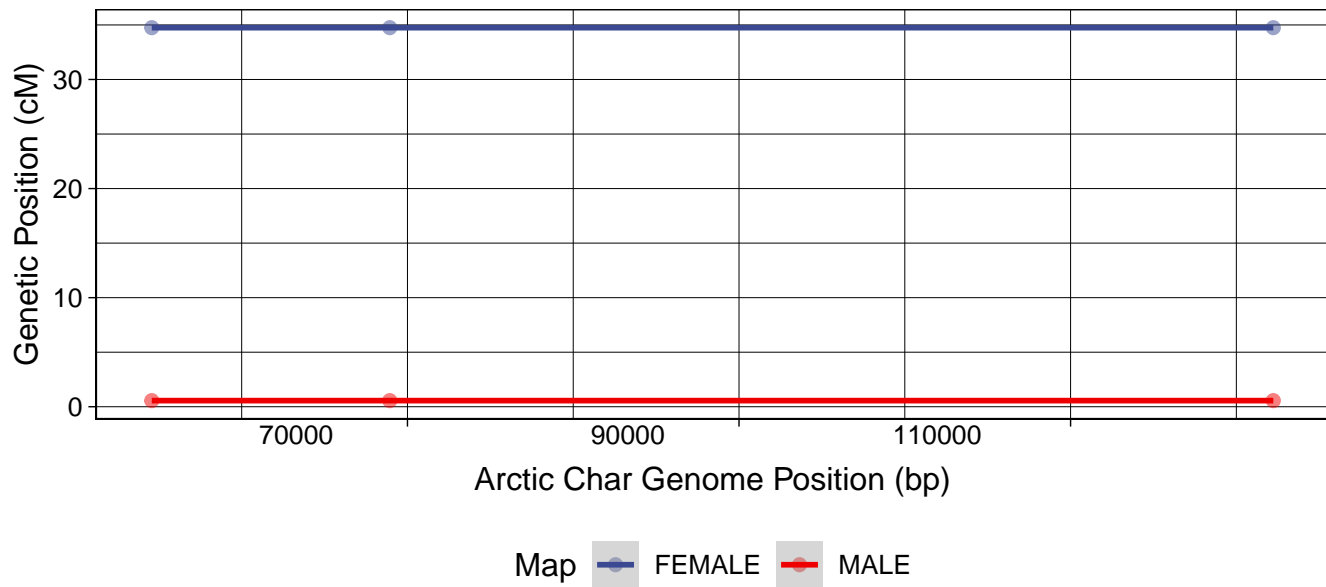
sna30 vs. NC_036855.1



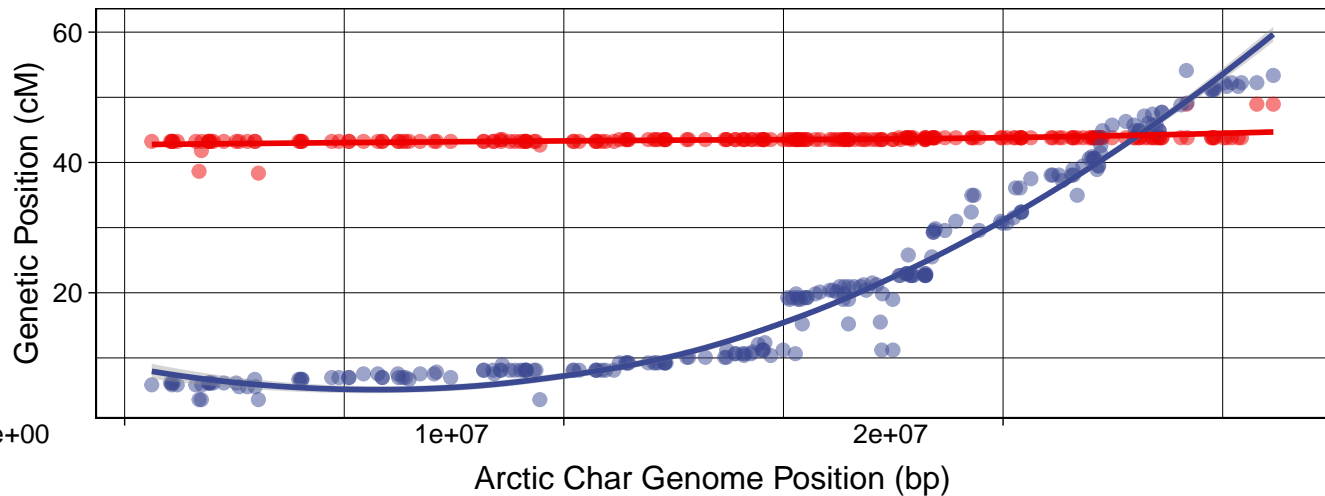
sna31 vs. NC_036842.1



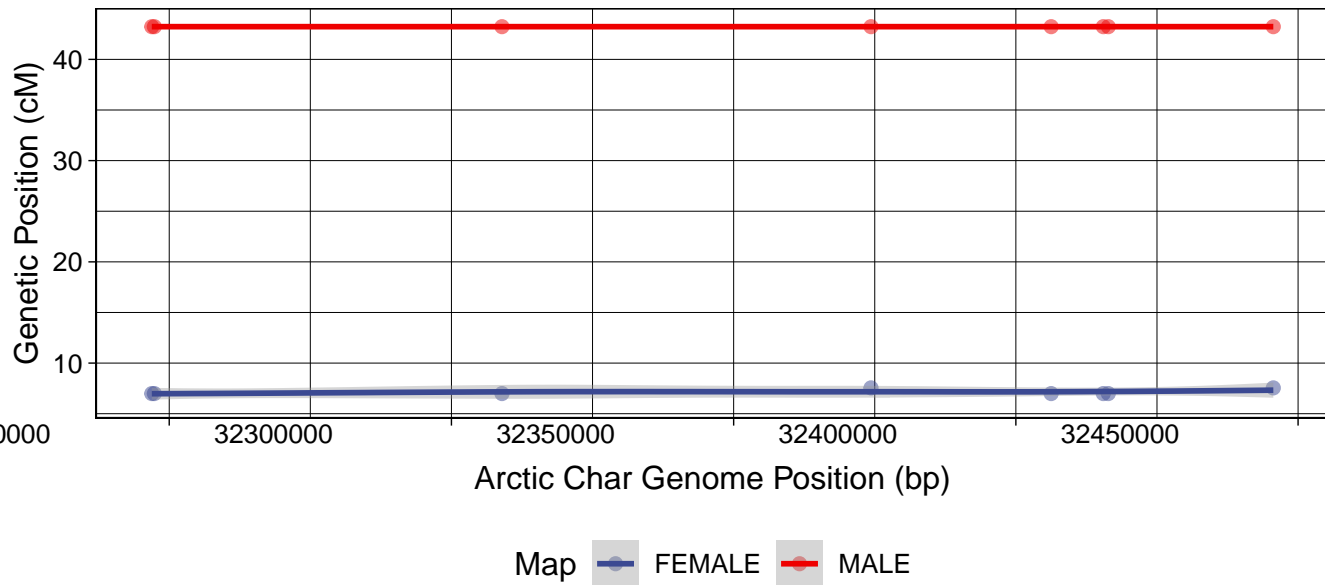
sna31 vs. NW_019943276.1



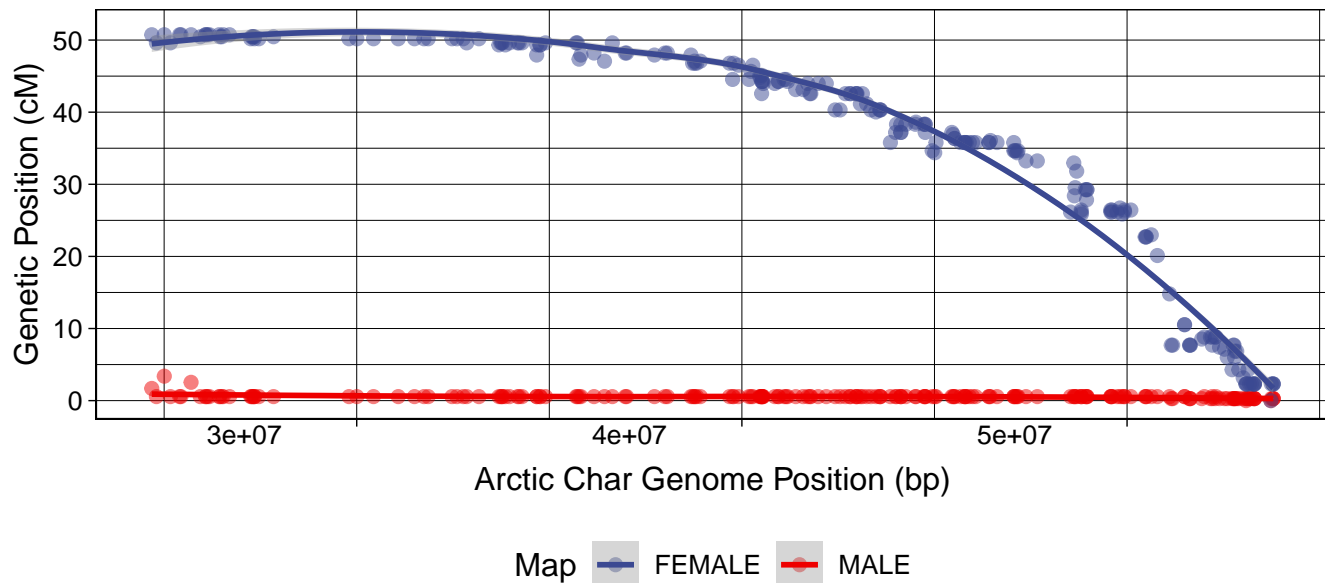
sna32 vs. NC_036869.1



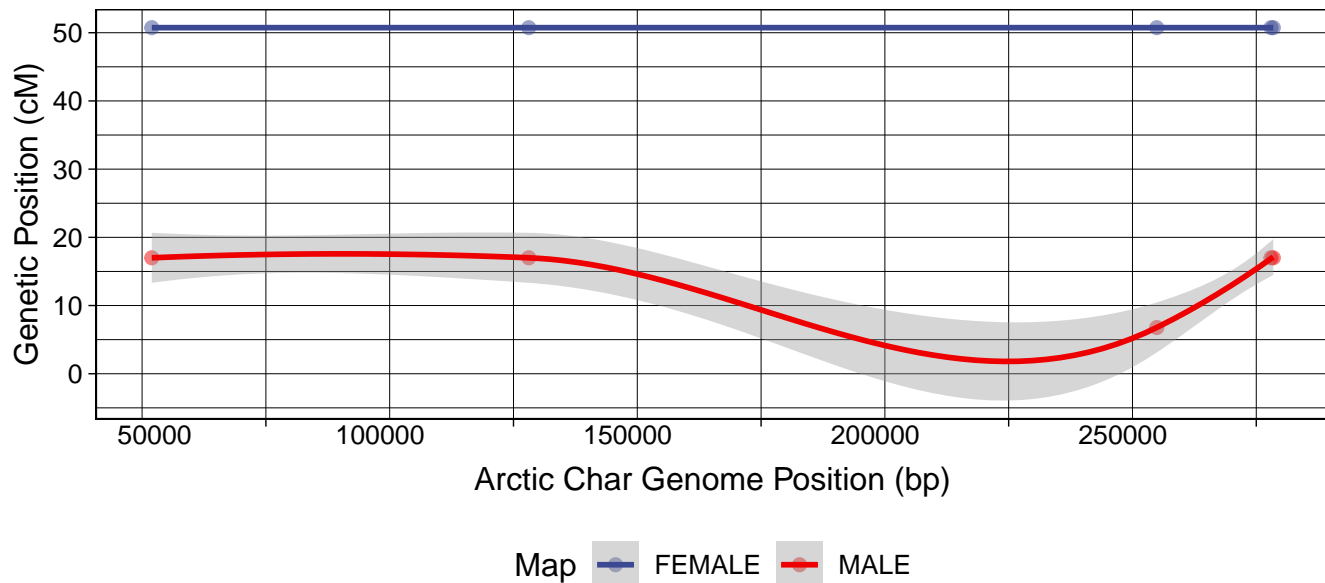
sna32 vs. NC_036872.1



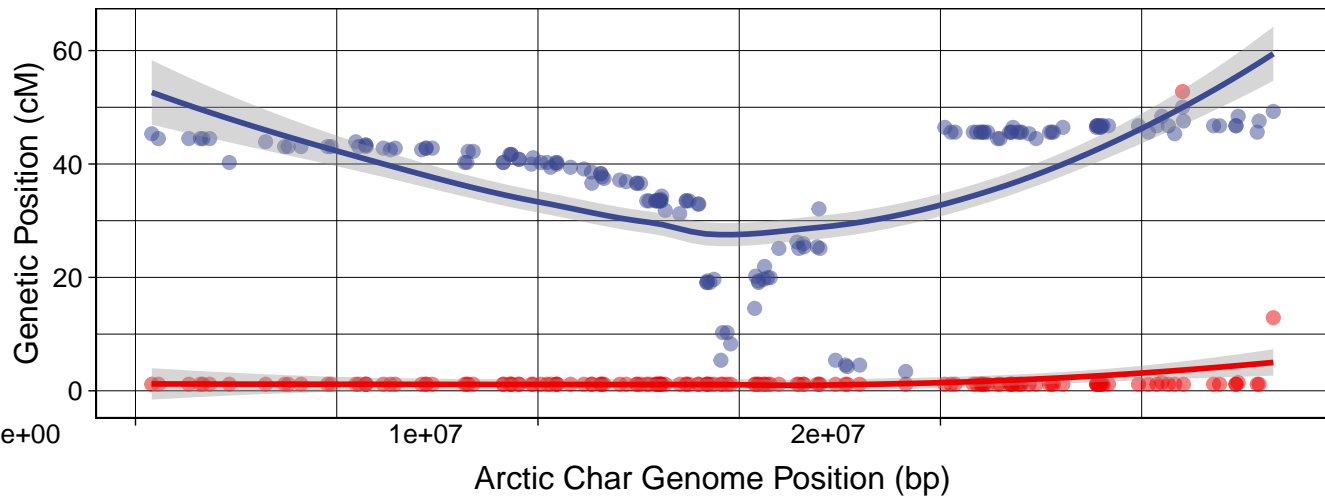
sna33 vs. NC_036854.1



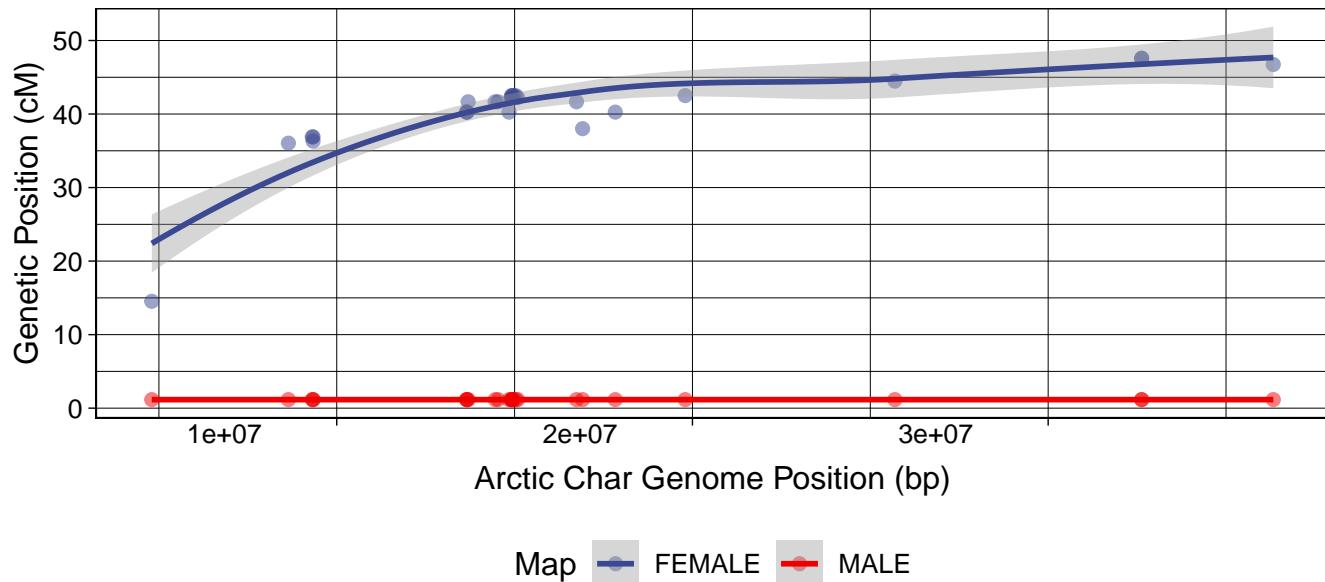
sna33 vs. NW_019943194.1



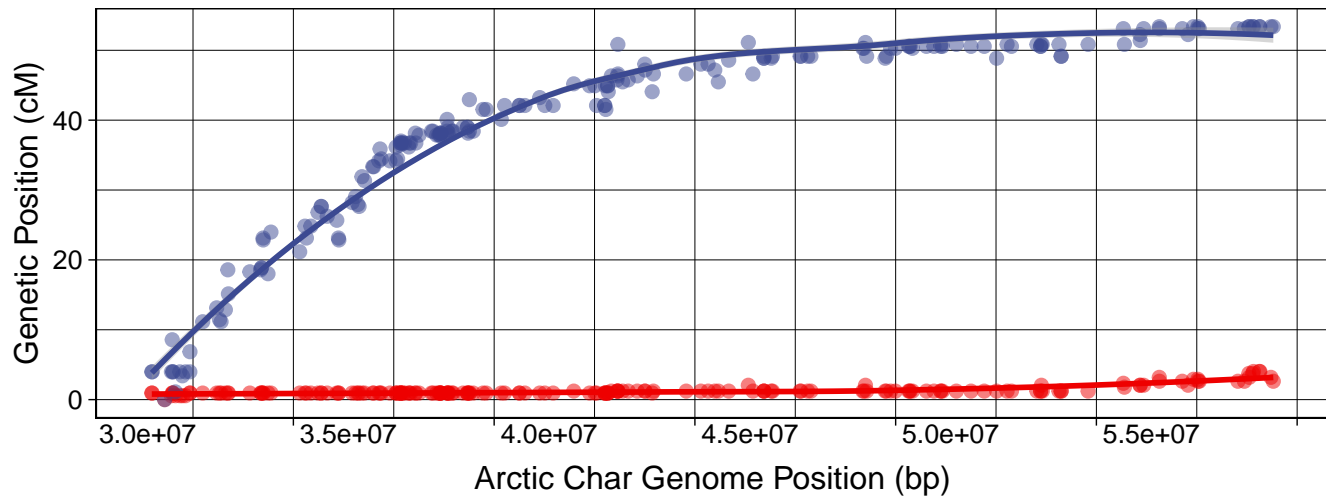
sna34 vs. NC_036841.1



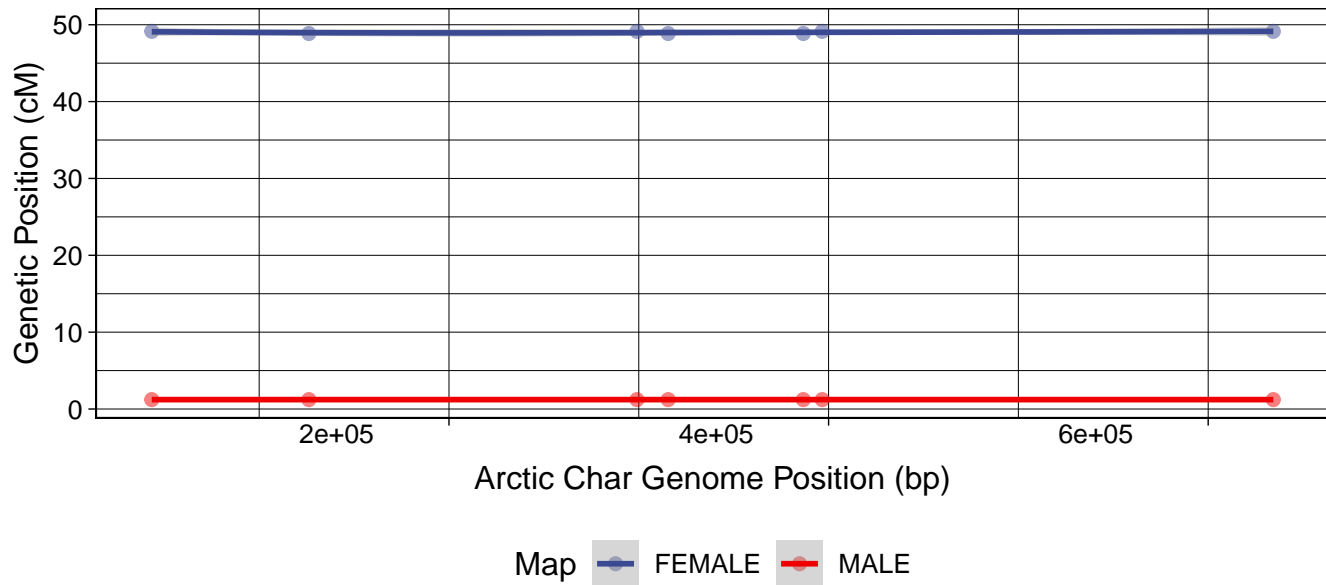
sna34 vs. NC_036862.1



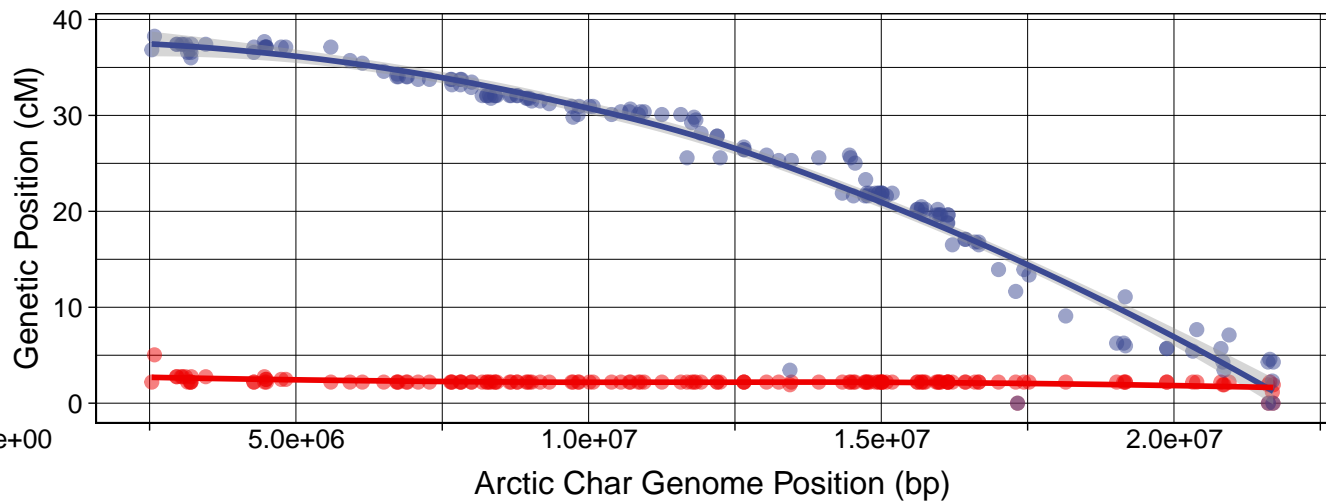
sna35 vs. NC_036848.1



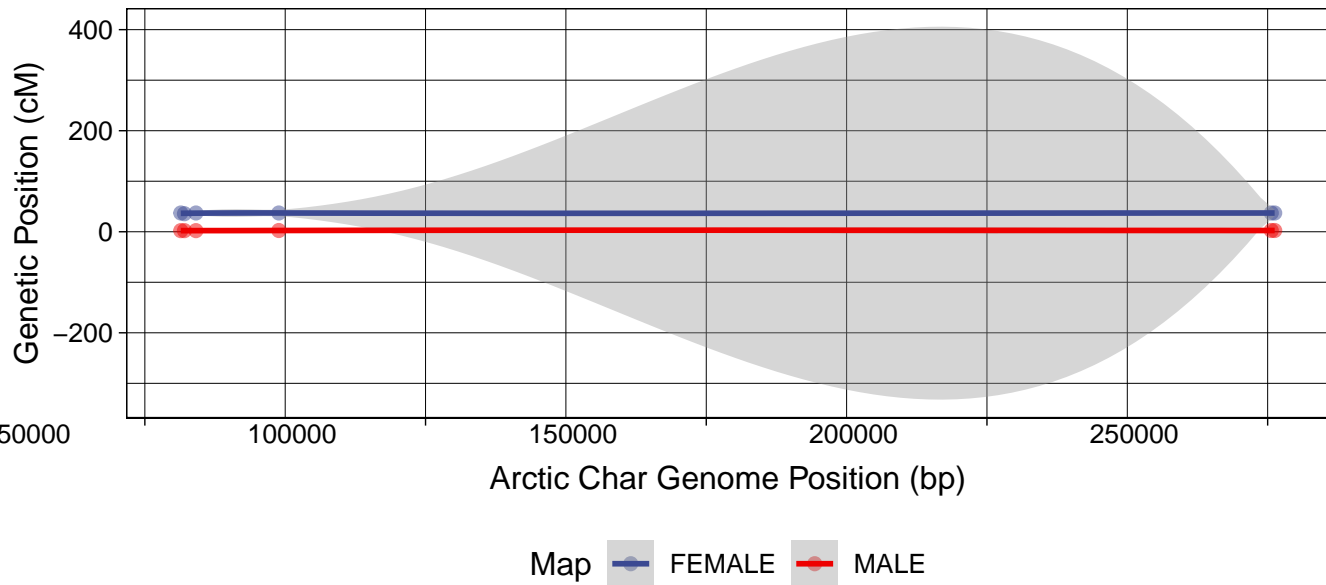
sna35 vs. NW_019957534.1



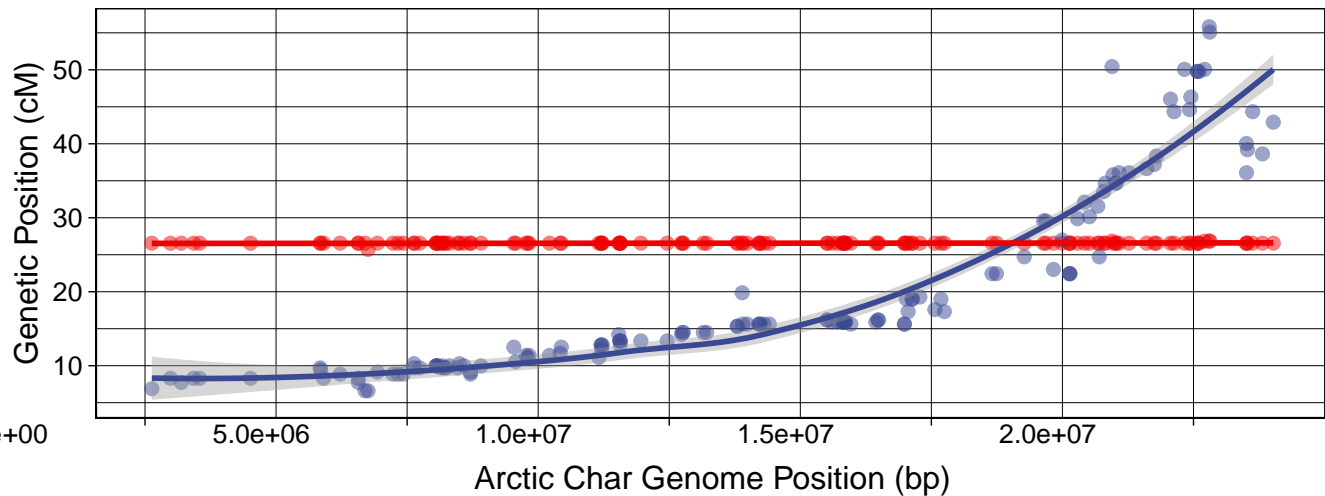
sna36 vs. NC_036876.1



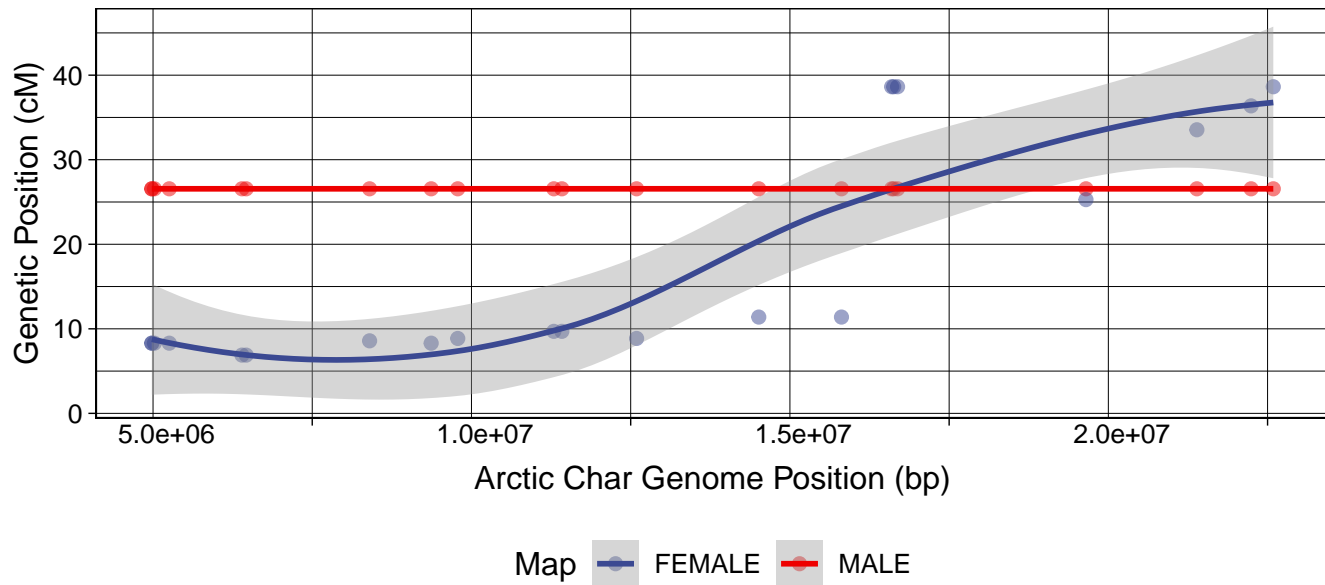
sna36 vs. NW_019957672.1



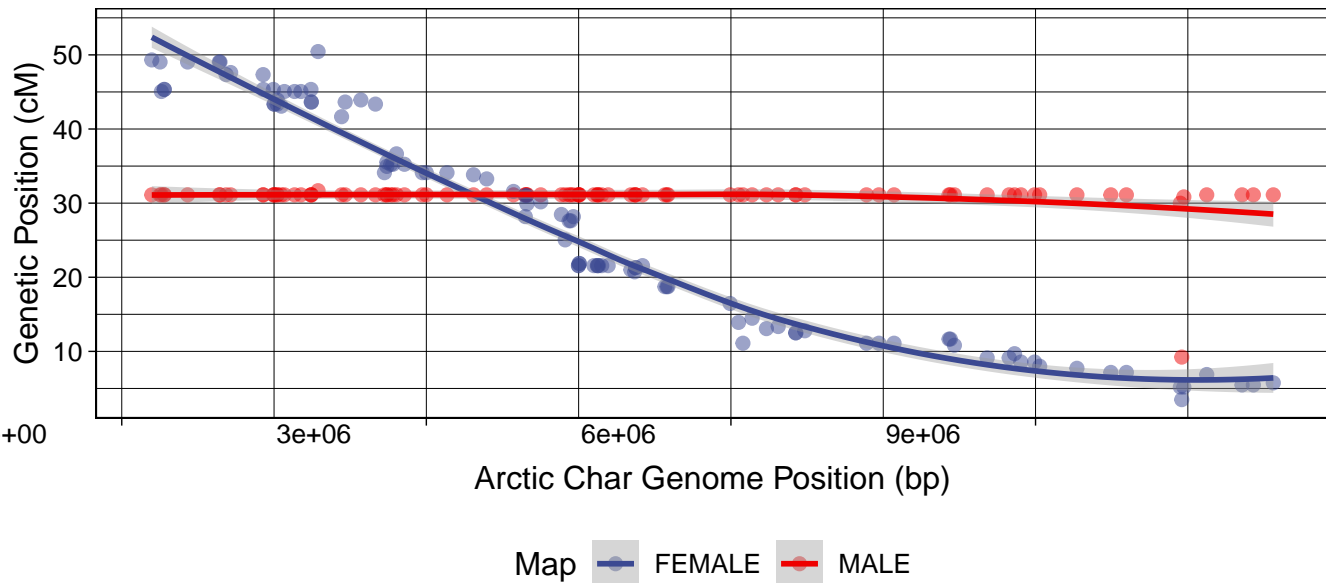
sna37 vs. NC_036874.1



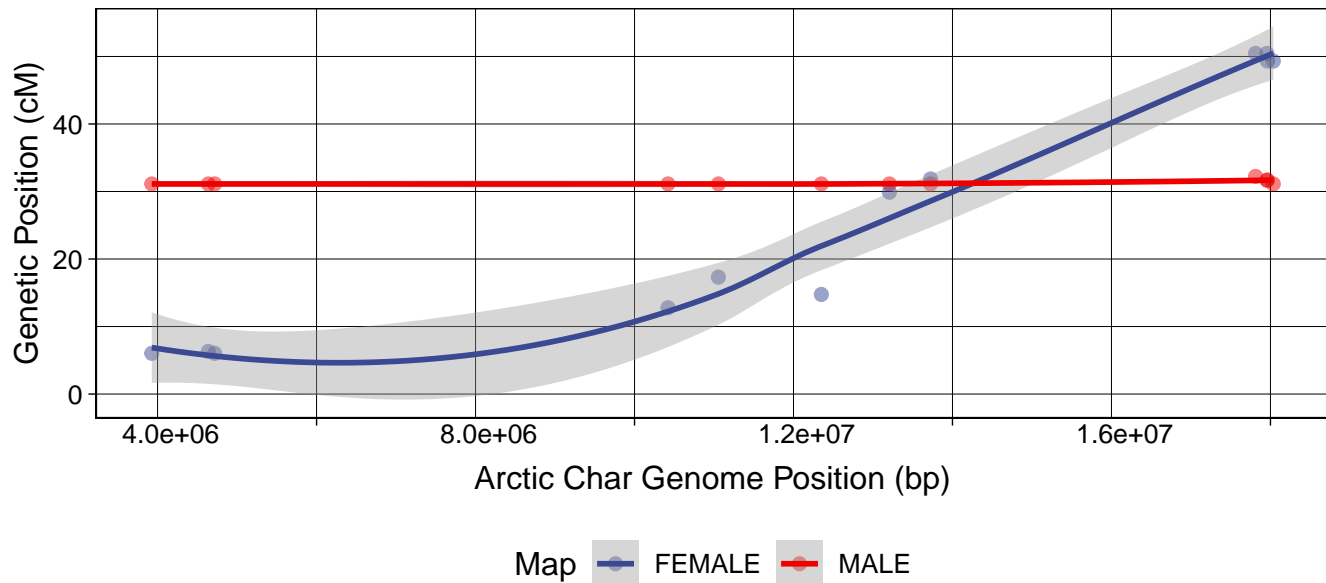
sna37 vs. NC_036845.1



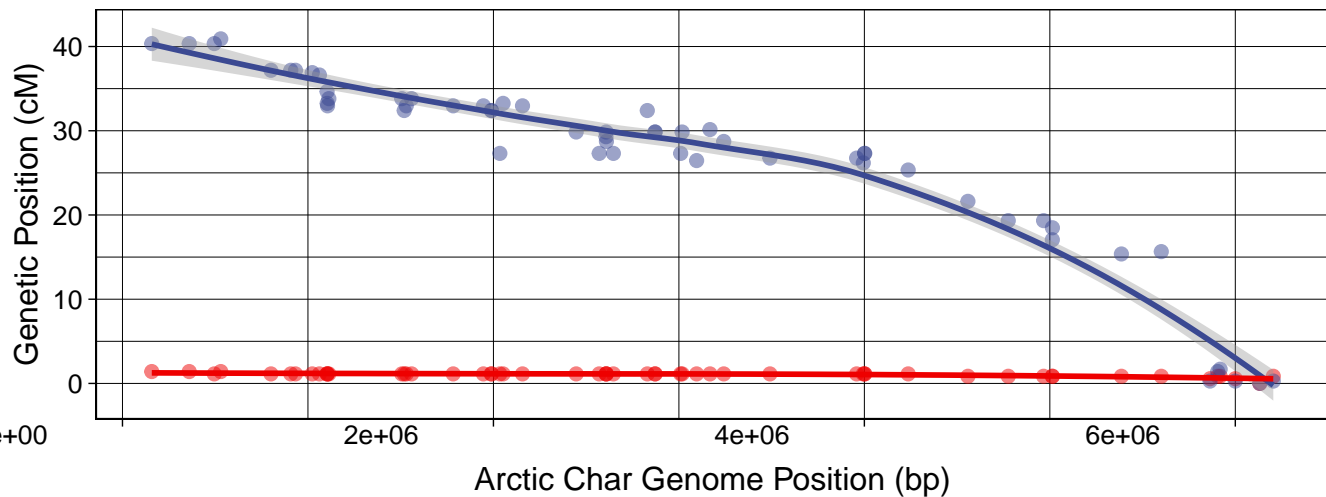
sna38 vs. NC_036864.1



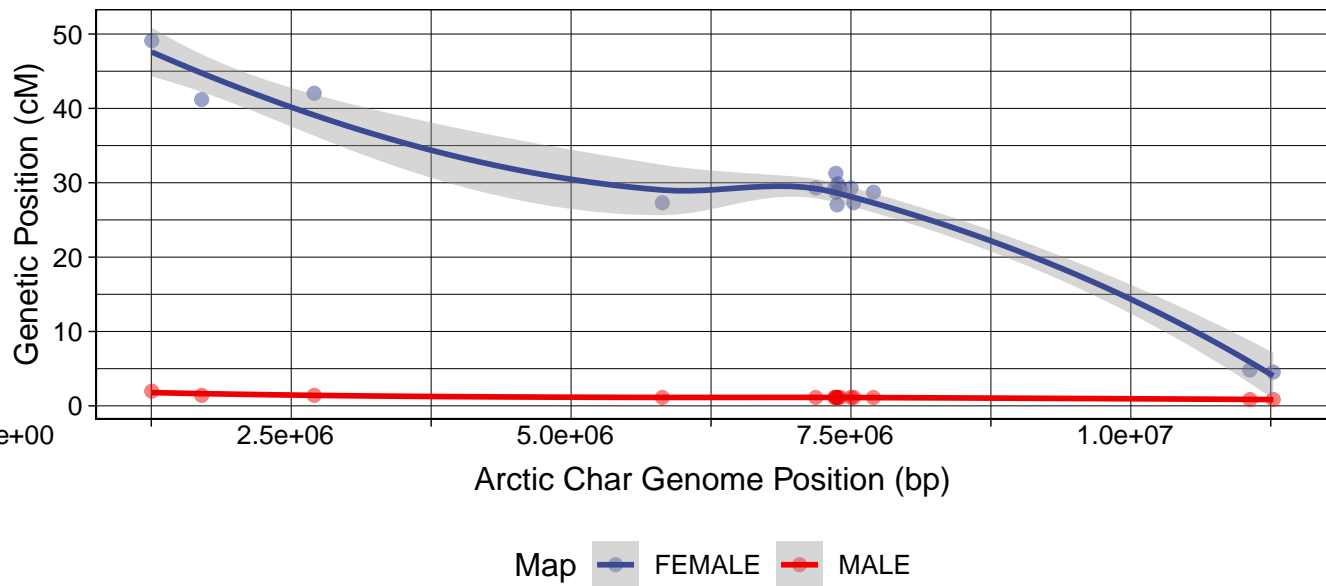
sna38 vs. NC_036840.1



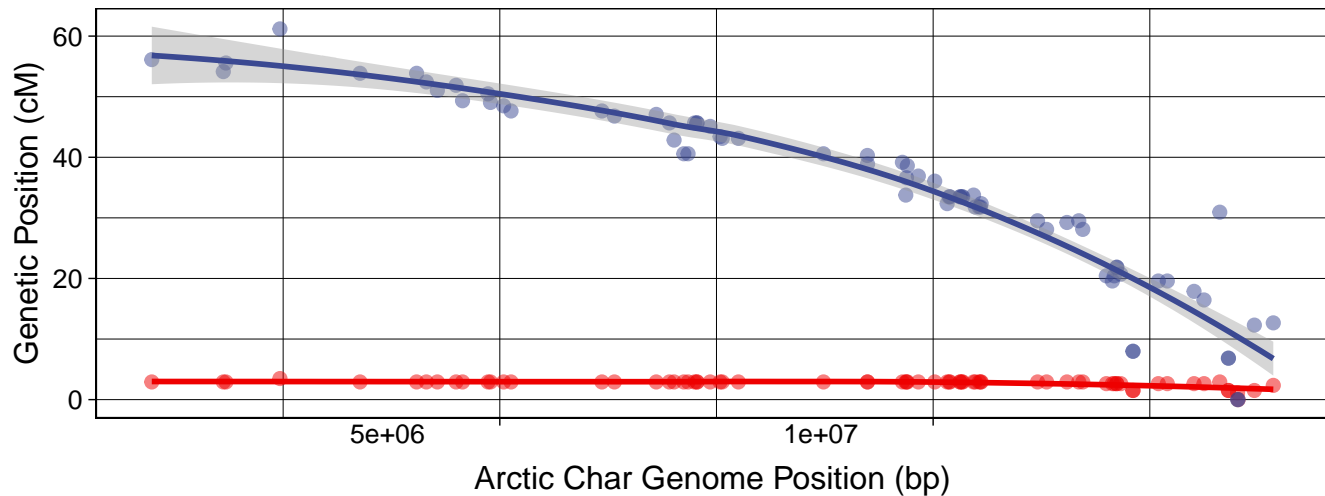
sna39 vs. NC_036861.1



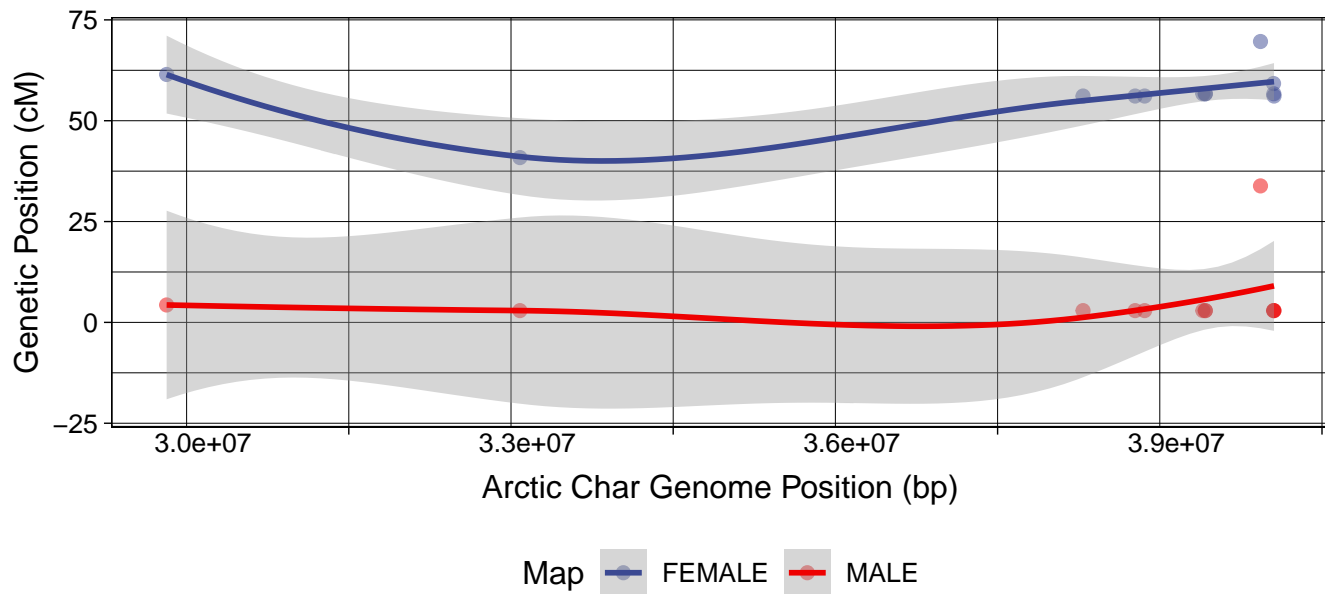
sna39 vs. NC_036838.1



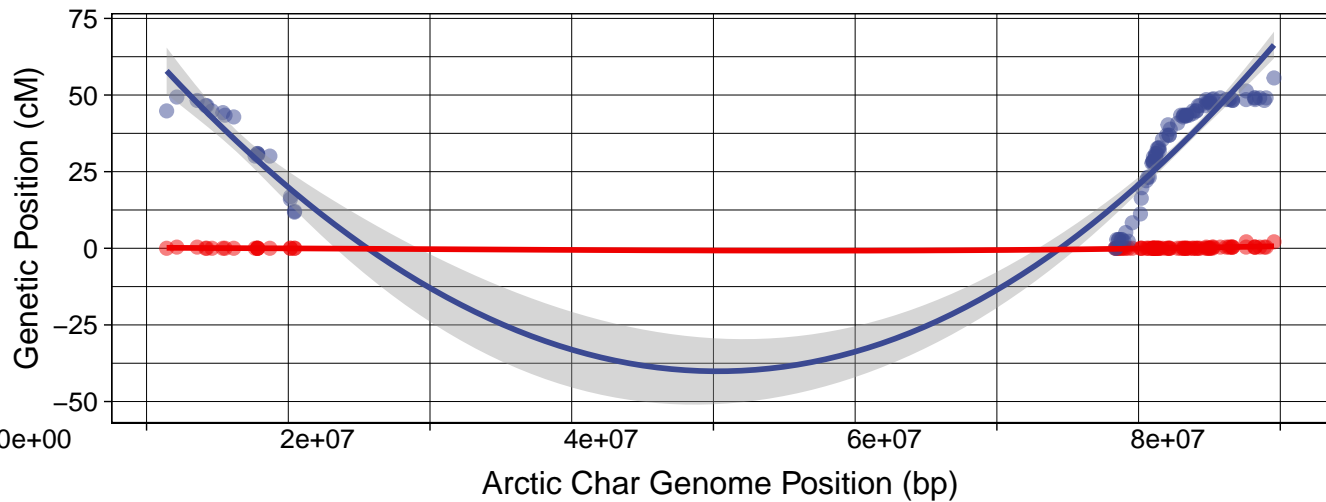
sna40 vs. NC_036852.1



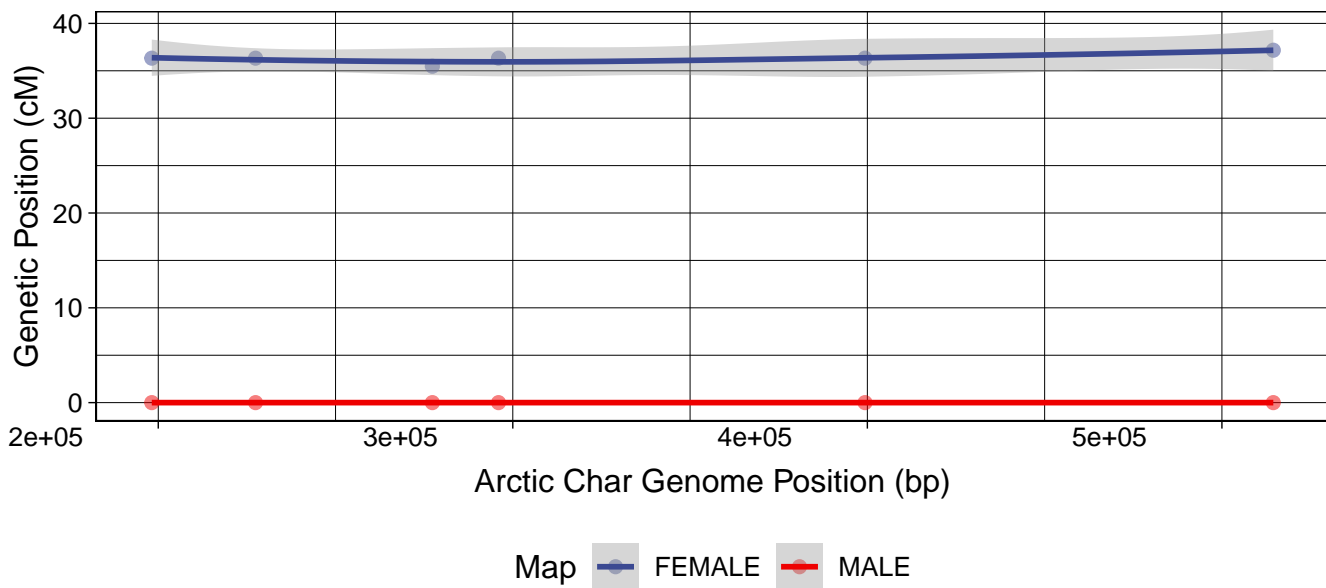
sna40 vs. NC_036867.1



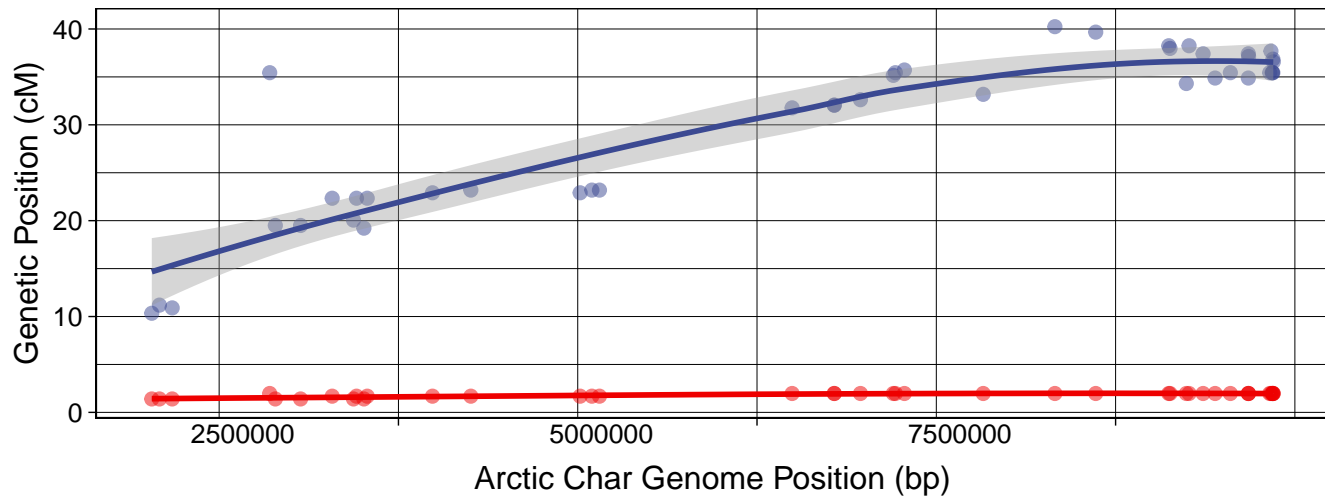
sna41 vs. NC_036860.1



sna41 vs. NW_019942591.1



sna42 vs. NC_036873.1



sna42 vs. NW_019942596.1

